

KRA51 Rabbit pAb

CatalogNo: YN3470

Key Features

Host Species

- Rabbit

Reactivity

- Human, Mouse

Applications

- WB

MW

- 31kD (Calculated)

Isotype

- IgG

Recommended Dilution Ratios

WB 1:500-2000

Storage

Storage* -15°C to -25°C/1 year (Do not lower than -25°C)**Formulation** Liquid in PBS containing 50% glycerol, 0.5% BSA and 0.02% sodium azide.

Basic Information

Clonality Polyclonal

Immunogen Information

Immunogen Synthesized peptide derived from human KRA51 AA range: 6-56**Specificity** This antibody detects endogenous levels of KRA51 at Human/Mouse

Target Information

Gene name KRTAP5-1 KAP5.1 KRN1L KRTAP5.1

Protein Name KRA51

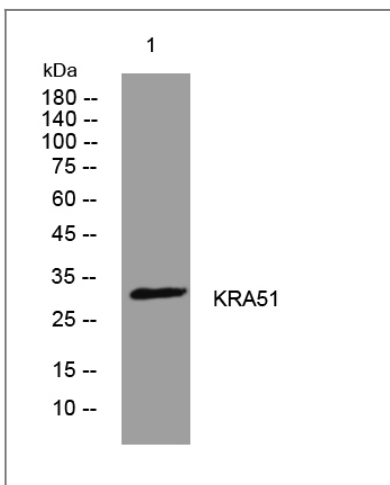
Organism	Gene ID	UniProt ID
Human	387264;	Q6L8H4;
Mouse	50774;	Q64507;

Cellular Localization keratin filament,

Tissue specificity Expressed in hair root but not in skin. Expressed also in lung, pancreas, ovary, testis.

Function Function:In the hair cortex, hair keratin intermediate filaments are embedded in an interfilamentous matrix, consisting of hair keratin-associated protein (KRTAP), which are essential for the formation of a rigid and resistant hair shaft through their extensive disulfide bond cross-linking with abundant cysteine residues of hair keratins. The matrix proteins include the high-sulfur and high-glycine-tyrosine keratins.,similarity:Belongs to the KRTAP type 5 family.,subunit:Interacts with hair keratins.,tissue specificity:Expressed in hair root but not in skin. Expressed also in lung, pancreas, ovary, testis.,

Validation Data



Western blot analysis of lysates from U2OS cells, primary antibody was diluted at 1:1000, 4° over night

Contact information

Orders: order@immunoway.com
Support: tech@immunoway.com
Telephone: 877-594-3616 (Toll Free), 408-747-0185
Website: <http://www.immunoway.com>
Address: 2200 Ringwood Ave San Jose, CA 95131 USA



Please scan the QR code to access additional product information:
KRA51 Rabbit pAb

