

GINM1 Rabbit pAb

CatalogNo: YN3454

Key Features

Host Species

- Rabbit

Reactivity

- Human, Mouse

Applications

- WB

MW

- 36kD (Calculated)

Isotype

- IgG

Recommended Dilution Ratios

WB 1:500-2000

Storage

Storage* -15°C to -25°C/1 year (Do not lower than -25°C)

Formulation Liquid in PBS containing 50% glycerol, 0.5% BSA and 0.02% sodium azide.

Basic Information

Clonality Polyclonal

Immunogen Information

Immunogen Synthesized peptide derived from human GINM1 AA range: 241-291

Specificity This antibody detects endogenous levels of GINM1 at Human/Mouse

Target Information

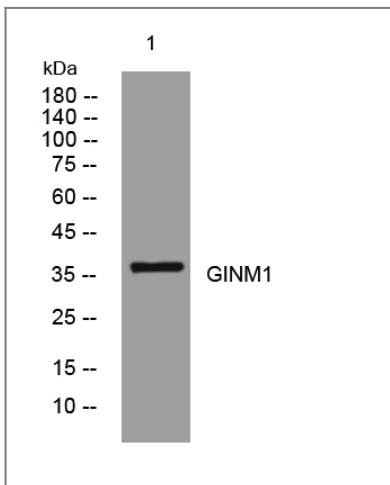
Gene name GINM1 C6orf72 UNQ710/PRO1361

Protein Name GINM1

Organism	Gene ID	UniProt ID
Human	116254 ;	Q9NU53 ;
Mouse	215751 ;	Q91WR6 ;

Cellular Localization Membrane ; Single-pass type I membrane protein .

Validation Data



Western blot analysis of lysates from SH-SY5Y cells, primary antibody was diluted at 1:1000, 4° over night

Contact information

Orders: order@immunoway.com
Support: tech@immunoway.com
Telephone: 877-594-3616 (Toll Free), 408-747-0185
Website: <http://www.immunoway.com>
Address: 2200 Ringwood Ave San Jose, CA 95131 USA



Please scan the QR code to access additional product information:
GINM1 Rabbit pAb

For Research Use Only. Not for Use in Diagnostic Procedures.

[Antibody](#) | [ELISA Kits](#) | [Protein](#) | [Reagents](#)