

## GPHRB Rabbit pAb

CatalogNo: YN3428

### Key Features

#### Host Species

- Rabbit

#### Reactivity

- Human

#### Applications

- WB

#### MW

- 50kD (Calculated)

#### Isotype

- IgG

### Recommended Dilution Ratios

WB 1:500-2000

### Storage

**Storage\*** -15°C to -25°C/1 year(Do not lower than -25°C)

**Formulation** Liquid in PBS containing 50% glycerol, 0.5% BSA and 0.02% sodium azide.

### Basic Information

**Clonality** Polyclonal

### Immunogen Information

**Immunogen** Synthesized peptide derived from human GPHRB AA range: 270-320

**Specificity** This antibody detects endogenous levels of GPHRB at Human

### Target Information

**Gene name** GPR89B GPHRB HSPC201

**Protein Name** GPHRB

**Organism**

Human

**Gene ID**

[51463](#);

**UniProt ID**

[POCG08](#);

**Cellular Localization**

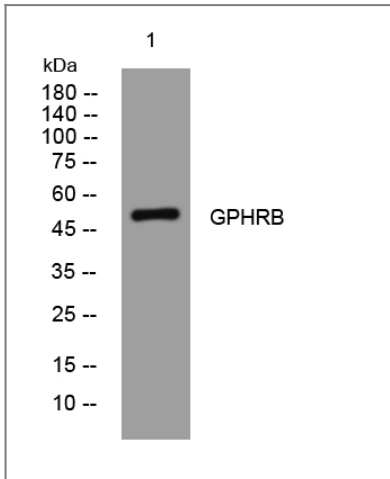
Golgi apparatus membrane ; Multi-pass membrane protein .

**Tissue specificity** Ubiquitous.

**Function**

Caution:Could be the product of a pseudogene.,Function:May be involved in the NF-kappa-B and MAPK signaling pathways.,miscellaneous:Does not seem to be able to bind GTP.,sequence Caution:Translated as Cys.,similarity:Belongs to the GPR89 family.,

## Validation Data



Western blot analysis of lysates from SH-SY5Y cells, primary antibody was diluted at 1:1000, 4°over night

## Contact information

Orders: [order@immunoway.com](mailto:order@immunoway.com)  
Support: [tech@immunoway.com](mailto:tech@immunoway.com)  
Telephone: 877-594-3616 (Toll Free), 408-747-0185  
Website: <http://www.immunoway.com>  
Address: 2200 Ringwood Ave San Jose, CA 95131 USA



Please scan the QR code to access additional product information:  
**GPHRB Rabbit pAb**