

FBXW5 Rabbit pAb

CatalogNo: YN3174

Key Features

Host Species

- Rabbit

Reactivity

- Human, Mouse, Rat

Applications

- WB

MW

- 60kD (Observed)

Isotype

- IgG

Recommended Dilution Ratios

WB 1:500-2000

Storage

Storage* -15°C to -25°C/1 year (Do not lower than -25°C)

Formulation Liquid in PBS containing 50% glycerol, 0.5% BSA and 0.02% sodium azide.

Basic Information

Clonality Polyclonal

Immunogen Information

Immunogen Synthesized peptide derived from human FBXW5 AA range: 319-369

Specificity This antibody detects endogenous levels of FBXW5 at Human/Mouse/Rat

Target Information

Gene name FBXW5 FBW5 PP3971

Protein Name FBXW5

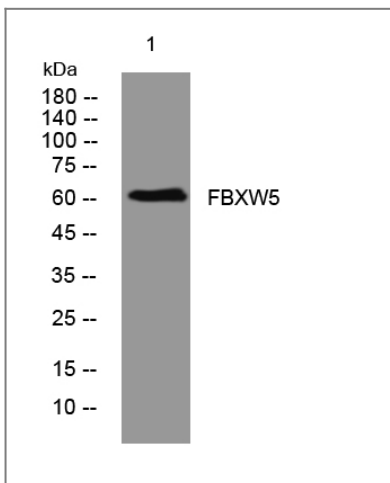
Organism	Gene ID	UniProt ID
Human	54461 ;	Q969U6 ;
Mouse	30839 ;	Q9QXW2 ;
Rat	362081 ;	Q4KLI9 ;

Cellular Localization Cytoplasm .

Tissue specificity Brain,Cervix,Colon,Ovary,Placenta,Skin,Testis,

Function Function:Substrate-recognition component of the SCF (SKP1-CUL1-F-box protein)-type E3 ubiquitin ligase complex.,similarity:Contains 1 F-box domain.,similarity:Contains 3 WD repeats.,subunit:Interacts with SKP1A and CUL1.,

Validation Data



Western blot analysis of lysates from DU145 cells, primary antibody was diluted at 1:1000, 4° over night

Contact information

Orders: order@immunoway.com
Support: tech@immunoway.com
Telephone: 877-594-3616 (Toll Free), 408-747-0185
Website: <http://www.immunoway.com>
Address: 2200 Ringwood Ave San Jose, CA 95131 USA



Please scan the QR code to access additional product information:
FBXW5 Rabbit pAb