

GNAI1 Rabbit pAb

CatalogNo: YN2936

Key Features

Host Species

- Rabbit

Reactivity

- Human, Mouse, Rat

Applications

- WB, ELISA

MW

- 38kD (Observed)

Isotype

- IgG

Recommended Dilution Ratios

WB 1:500-2000**ELISA 1:5000-20000**

Storage

Storage* -15°C to -25°C/1 year (Do not lower than -25°C)**Formulation** Liquid in PBS containing 50% glycerol, and 0.02% sodium azide.

Basic Information

Clonality Polyclonal

Immunogen Information

Immunogen Synthesized peptide derived from part region of human protein**Specificity** GNAI1 Polyclonal Antibody detects endogenous levels of protein.

Target Information

Gene name GNAI1

Protein Name Guanine nucleotide-binding protein G(i) subunit alpha-1 (Adenylate cyclase-inhibiting G alpha protein)

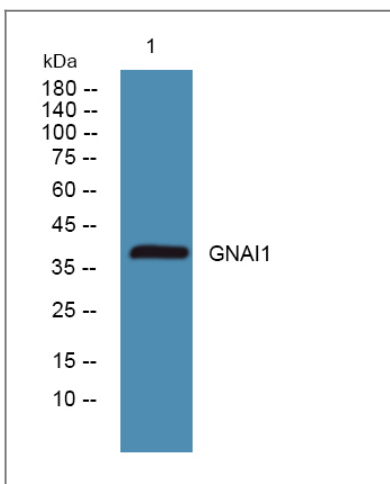
Organism	Gene ID	UniProt ID
Human	2770 ;	P63096 ;
Mouse		B2RSH2 ;
Rat		P10824 ;

Cellular Localization Nucleus . Cytoplasm . Cell membrane ; Peripheral membrane protein ; Cytoplasmic side . Cytoplasm, cytoskeleton, microtubule organizing center, centrosome . Cytoplasm, cell cortex . Membrane ; Lipid-anchor . Localizes in the centrosomes of interphase and mitotic cells, but not in centrosomes during cytokinesis. Detected at the cleavage furrow or the midbody (PubMed:17635935). Localized at the plasma membrane throughout mitosis. Colocalizes with RIC8A and RGS14 at the plasma membrane. .

Tissue specificity Adipocyte,Brain,

Function Function:Guanine nucleotide-binding proteins (G proteins) are involved as modulators or transducers in various transmembrane signaling systems. The G(i) proteins are involved in hormonal regulation of adenylate cyclase: they inhibit the cyclase in response to beta-adrenergic stimuli.,similarity:Belongs to the G-alpha family. G(i/o/t/z) subfamily.,subunit:G proteins are composed of 3 units; alpha, beta and gamma. The alpha chain contains the guanine nucleotide binding site. Interacts with GPSM1.,

Validation Data



Western blot analysis of lysates from A431 cells, primary antibody was diluted at 1:1000, 4°over night

Contact information

Orders: order@immunoway.com
Support: tech@immunoway.com
Telephone: 877-594-3616 (Toll Free), 408-747-0185
Website: http://www.immunoway.com
Address: 2200 Ringwood Ave San Jose, CA 95131 USA



Please scan the QR code
to access additional
product information:
GNAI1 Rabbit pAb

For Research Use Only. Not for Use in Diagnostic Procedures.

[Antibody](#) | [ELISA Kits](#) | [Protein](#) | [Reagents](#)