

OR2L2 Rabbit pAb

CatalogNo: YN2754

Key Features

Host Species

- Rabbit

Reactivity

- Human

Applications

- WB,ELISA

MW

- 34kD (Observed)

Isotype

- IgG

Recommended Dilution Ratios

WB 1:500-2000

ELISA 1:5000-20000

Storage

Storage* -15°C to -25°C/1 year(Do not lower than -25°C)

Formulation Liquid in PBS containing 50% glycerol, and 0.02% sodium azide.

Basic Information

Clonality Polyclonal

Immunogen Information

Immunogen Synthesized peptide derived from human protein . at AA range: 70-150

Specificity OR2L2 Polyclonal Antibody detects endogenous levels of protein.

Target Information

Gene name OR2L2 OR2L12 OR2L4P

Protein Name Olfactory receptor 2L2 (HTPCRH07) (Olfactory receptor 2L12) (Olfactory receptor 2L4)

Organism

Human

Gene ID

[26246](#);

UniProt ID

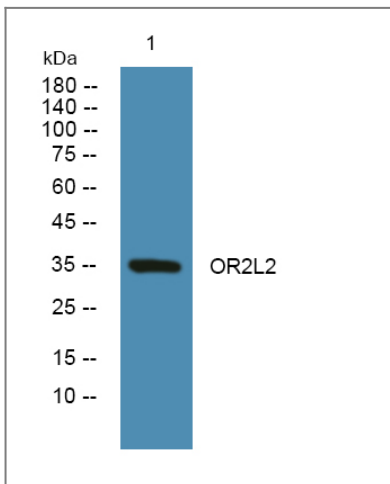
[Q8NH16](#);

Cellular Localization Cell membrane; Multi-pass membrane protein.

Tissue specificity Brain,Testis,

Function Function:Odorant receptor .,similarity:Belongs to the G-protein coupled receptor 1 family.,

Validation Data



Western blot analysis of lysates from KB cells, primary antibody was diluted at 1:1000, 4°over night

Contact information

Orders: order@immunoway.com
Support: tech@immunoway.com
Telephone: 877-594-3616 (Toll Free), 408-747-0185
Website: <http://www.immunoway.com>
Address: 2200 Ringwood Ave San Jose, CA 95131 USA



Please scan the QR code to access additional product information:
OR2L2 Rabbit pAb

For Research Use Only. Not for Use in Diagnostic Procedures.

[Antibody](#) | [ELISA Kits](#) | [Protein](#) | [Reagents](#)