

OR2F1 Rabbit pAb

CatalogNo: YN2752

Key Features

Host Species

- Rabbit

Reactivity

- Human

Applications

- WB,ELISA

MW

- 34kD (Observed)

Isotype

- IgG

Recommended Dilution Ratios

WB 1:500-2000

ELISA 1:5000-20000

Storage

Storage* -15°C to -25°C/1 year(Do not lower than -25°C)

Formulation Liquid in PBS containing 50% glycerol, and 0.02% sodium azide.

Basic Information

Clonality Polyclonal

Immunogen Information

Immunogen Synthesized peptide derived from human protein . at AA range: 170-250

Specificity OR2F1 Polyclonal Antibody detects endogenous levels of protein.

Target Information

Gene name OR2F1 OLF3 OR2F3 OR2F3P OR2F4 OR2F5

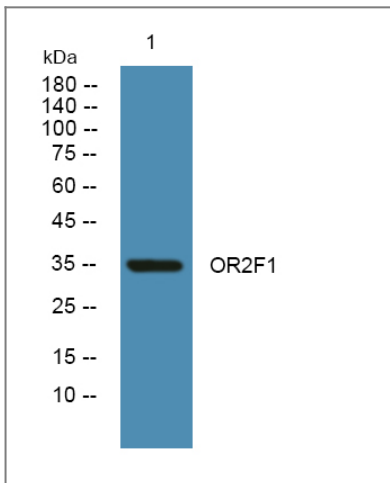
Protein Name Olfactory receptor 2F1 (Olfactory receptor 2F3) (Olfactory receptor 2F4) (Olfactory receptor 2F5) (Olfactory receptor-like protein OLF3)

Organism	Gene ID	UniProt ID
Human	26211 ;	Q13607 ;

Cellular Localization Cell membrane; Multi-pass membrane protein.

Function Function:Odorant receptor .,similarity:Belongs to the G-protein coupled receptor 1 family.,

Validation Data



Western blot analysis of lysates from HCT116 cells, primary antibody was diluted at 1:1000, 4°over night

Contact information

Orders: order@immunoway.com
Support: tech@immunoway.com
Telephone: 877-594-3616 (Toll Free), 408-747-0185
Website: <http://www.immunoway.com>
Address: 2200 Ringwood Ave San Jose, CA 95131 USA



Please scan the QR code to access additional product information:
OR2F1 Rabbit pAb

For Research Use Only. Not for Use in Diagnostic Procedures.

[Antibody](#) | [ELISA Kits](#) | [Protein](#) | [Reagents](#)