

O52E8 Rabbit pAb

CatalogNo: YN2576

Key Features

Host Species

- Rabbit

Reactivity

- Human

Applications

- WB,ELISA

MW

- 34kD (Observed)

Isotype

- IgG

Recommended Dilution Ratios

WB 1:500-2000**ELISA 1:5000-20000**

Storage

Storage* -15°C to -25°C/1 year(Do not lower than -25°C)**Formulation** Liquid in PBS containing 50% glycerol, and 0.02% sodium azide.

Basic Information

Clonality Polyclonal

Immunogen Information

Immunogen Synthesized peptide derived from part region of human protein AA range: 81-131**Specificity** O52E8 Polyclonal Antibody detects endogenous levels of protein.

Target Information

Gene name OR52E8

Protein Name Olfactory receptor 52E8 (Olfactory receptor OR11-54)

Organism

Human

Gene ID

[390079](#);

UniProt ID

[Q6IFG1](#);

Cellular Localization

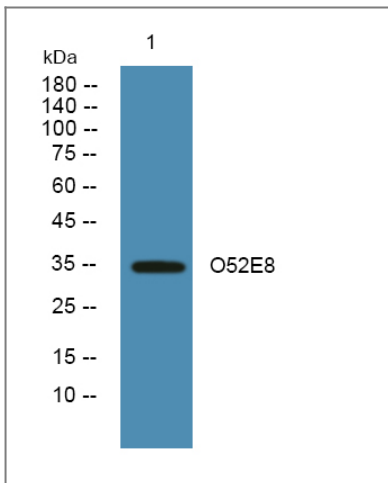
Cell membrane; Multi-pass membrane protein.

Tissue specificity Testis,

Function

Caution:It is uncertain whether Met-1 or Met-5 is the initiator.,Function:Odorant receptor
.,similarity:Belongs to the G-protein coupled receptor 1 family.,

Validation Data



Western blot analysis of lysates from A431 cells, primary antibody was diluted at 1:1000, 4°over night

Contact information

Orders: order@immunoway.com
Support: tech@immunoway.com
Telephone: 877-594-3616 (Toll Free), 408-747-0185
Website: <http://www.immunoway.com>
Address: 2200 Ringwood Ave San Jose, CA 95131 USA



Please scan the QR code to access additional product information:
O52E8 Rabbit pAb

For Research Use Only. Not for Use in Diagnostic Procedures.

[Antibody](#) | [ELISA Kits](#) | [Protein](#) | [Reagents](#)