

GNRR2 Rabbit pAb

CatalogNo: YN2546

Key Features

Host Species

- Rabbit

Reactivity

- Human

Applications

- WB,ELISA

MW

- 32kD (Observed)

Isotype

- IgG

Recommended Dilution Ratios

WB 1:500-2000

ELISA 1:5000-20000

Storage

Storage* -15°C to -25°C/1 year(Do not lower than -25°C)

Formulation Liquid in PBS containing 50% glycerol, and 0.02% sodium azide.

Basic Information

Clonality Polyclonal

Immunogen Information

Immunogen Synthesized peptide derived from human protein . at AA range: 10-90

Specificity GNRR2 Polyclonal Antibody detects endogenous levels of protein.

Target Information

Gene name GNRHR2

Protein Name Putative gonadotropin-releasing hormone II receptor (GnRH II receptor) (GnRH-II-R) (Type II GnRH receptor)

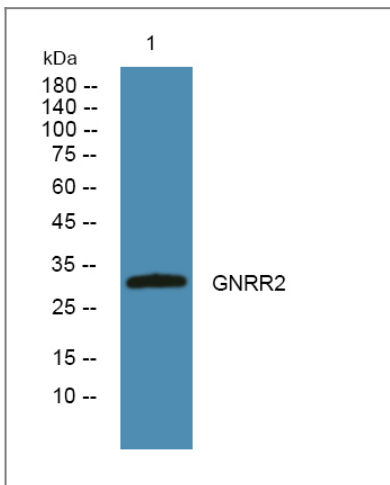
| Organism | Gene ID | UniProt ID |
|----------|---------|--------------------------|
| Human | | Q96P88 ; |

Cellular Localization Cell membrane; Multi-pass membrane protein.

Tissue specificity Expressed in many tissues.

Function Caution:Could be the product of a pseudogene. This protein seems to be substantially shorter than orthologous proteins in related organisms.,Function:Receptor for gonadotropin releasing hormone II (GnRH II). This receptor mediates its action by association with G proteins that activate a phosphatidylinositol-calcium second messenger system .,PTM:Phosphorylated on the C-terminal cytoplasmic tail.,sequence Caution:Translated as stop.,similarity:Belongs to the G-protein coupled receptor 1 family.,tissue specificity:Expressed in many tissues.,

Validation Data



Western blot analysis of lysates from K562 cells, primary antibody was diluted at 1:1000, 4° over night

Contact information

Orders: order@immunoway.com
Support: tech@immunoway.com
Telephone: 877-594-3616 (Toll Free), 408-747-0185
Website: <http://www.immunoway.com>
Address: 2200 Ringwood Ave San Jose, CA 95131 USA



Please scan the QR code to access additional product information:
GNRR2 Rabbit pAb

