

## O52Z1 Rabbit pAb

CatalogNo: YN2516

### Key Features

#### Host Species

- Rabbit

#### Reactivity

- Human

#### Applications

- WB,ELISA

#### MW

- 32kD (Observed)

#### Isotype

- IgG

### Recommended Dilution Ratios

**WB 1:500-2000**

**ELISA 1:5000-20000**

### Storage

**Storage\*** -15°C to -25°C/1 year(Do not lower than -25°C)

**Formulation** Liquid in PBS containing 50% glycerol, and 0.02% sodium azide.

### Basic Information

**Clonality** Polyclonal

### Immunogen Information

**Immunogen** Synthesized peptide derived from human protein . at AA range: 220-300

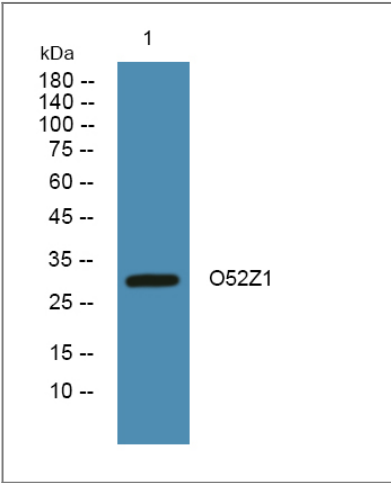
**Specificity** O52Z1 Polyclonal Antibody detects endogenous levels of protein.

### Target Information

**Gene name** OR52Z1 OR52Z1P

<b>Protein Name</b>	Olfactory receptor 52Z1		
	<b>Organism</b>	<b>Gene ID</b>	<b>UniProt ID</b>
	Human		<a href="#">P0C646;</a>
<b>Cellular Localization</b>	Cell membrane ; Multi-pass membrane protein .		
<b>Function</b>	Function:Odorant receptor .,polymorphism:A single nucleotide insertion at position Gly-8 in the gene coding for this protein is responsible for functional diversity thus producing a pseudogene.,similarity:Belongs to the G-protein coupled receptor 1 family.,		

| Validation Data



Western blot analysis of lysates from SW480 cells, primary antibody was diluted at 1:1000, 4°over night

| Contact information

Orders:           order@immunoway.com  
 Support:          tech@immunoway.com  
 Telephone:       877-594-3616 (Toll Free), 408-747-0185  
 Website:          http://www.immunoway.com  
 Address:          2200 Ringwood Ave San Jose, CA 95131 USA



Please scan the QR code  
 to access additional  
 product information:  
**O52Z1 Rabbit pAb**