

OREX Rabbit pAb

CatalogNo: YN2481

Key Features

Host Species

- Rabbit

Reactivity

- Human, Mouse, Rat

Applications

- WB, ELISA

MW

- 14kD (Observed)

Isotype

- IgG

Recommended Dilution Ratios

WB 1:500-2000

ELISA 1:5000-20000

Storage

Storage* -15°C to -25°C/1 year (Do not lower than -25°C)

Formulation Liquid in PBS containing 50% glycerol, and 0.02% sodium azide.

Basic Information

Clonality Polyclonal

Immunogen Information

Immunogen Synthesized peptide derived from human protein . at AA range: 21-70

Specificity OREX Polyclonal Antibody detects endogenous levels of protein.

Target Information

Gene name HCRT OX PPORX PPOX

Protein Name Orexin (Hypocretin) (Hcrt) [Cleaved into: Orexin-A (Hypocretin-1) (Hcrt1); Orexin-B (Hypocretin-2) (Hcrt2)]

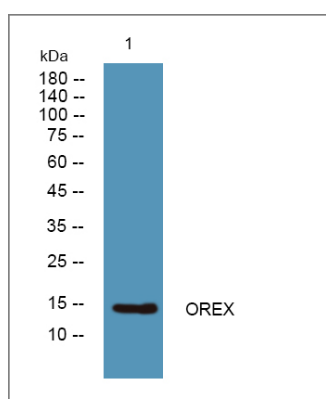
Organism	Gene ID	UniProt ID
Human	3060;	O43612;
Mouse		O55241;
Rat		O55232;

Cellular Localization Rough endoplasmic reticulum . Cytoplasmic vesicle . Cell junction, synapse . Associated with perikaryal rough endoplasmic reticulum as well as cytoplasmic large granular vesicles at synapses. .

Tissue specificity Abundantly expressed in subthalamic nucleus but undetectable in other brain regions tested (hypothalamus was not tested) and in heart, placenta, lung, liver, skeletal muscle, kidney and pancreas.

Function Disease:Defects in HCRT are a cause of narcolepsy [MIM:161400]. Narcolepsy is a neurological disabling sleep disorder, characterized by excessive daytime sleepiness, sleep fragmentation, symptoms of abnormal rapid-eye-movement (REM) sleep, such as cataplexy, hypnagogic hallucinations, and sleep paralysis. Cataplexy is a sudden loss of muscle tone triggered by emotions, which is the most valuable clinical feature used to diagnose narcolepsy. Human narcolepsy is associated with a deficient orexin system. Orexins are absent and/or greatly diminished in the brain and cerebrospinal fluid (CSF) of most narcoleptic patients. Human narcolepsy is primarily a sporadically occurring disorder but familial clustering has been observed.,Function:Neuropeptides that play a significant role in the regulation of food intake and sleep-wakefulness, possibly by coordinating the complex behavioral and physiologic responses of these complementary homeostatic functions. A broader role in the homeostatic regulation of energy metabolism, autonomic function, hormonal balance and the regulation of body fluids, is also suggested. Orexin-A binds to both OX1R and OX2R with a high affinity, whereas orexin-B binds only to OX2R with a similar high affinity.,online information:Qui dort dine - Issue 15 of October 2001,PTM:Specific enzymatic cleavages at paired basic residues yield the different active peptides.,similarity:Belongs to the orexin family.,subcellular location:Associated with perikaryal rough endoplasmic reticulum as well as cytoplasmic large granular vesicles at synapses.,tissue specificity:Abundantly expressed in subthalamic nucleus but undetectable in other brain regions tested (hypothalamus was not tested) and in heart, placenta, lung, liver, skeletal muscle, kidney and pancreas.,

Validation Data



Western blot analysis of lysates from PC12 cells, primary antibody was diluted at 1:1000, 4° over night

| Contact information

Orders: order@immunoway.com
Support: tech@immunoway.com
Telephone: 877-594-3616 (Toll Free), 408-747-0185
Website: <http://www.immunoway.com>
Address: 2200 Ringwood Ave San Jose, CA 95131 USA



Please scan the QR code
to access additional
product information:
OREX Rabbit pAb

For Research Use Only. Not for Use in Diagnostic Procedures.

[Antibody](#) | [ELISA Kits](#) | [Protein](#) | [Reagents](#)