

ZBP1 Rabbit pAb

CatalogNo: YN2476

Key Features

Host Species

- Rabbit

Reactivity

- Human,Rat,Mouse,

Applications

- WB,ELISA

MW

- 47kD (Observed)

Isotype

- IgG

Recommended Dilution Ratios

WB 1:500-2000**ELISA 1:5000-20000**

Storage

Storage* -15°C to -25°C/1 year(Do not lower than -25°C)**Formulation** Liquid in PBS containing 50% glycerol, and 0.02% sodium azide.

Basic Information

Clonality Polyclonal

Immunogen Information

Immunogen Synthesized peptide derived from human protein . at AA range: 21-70**Specificity** ZBP1 Polyclonal Antibody detects endogenous levels of protein.

Target Information

Gene name ZBP1 C20orf183 DLM1

Protein Name Z-DNA-binding protein 1 (Tumor stroma and activated macrophage protein DLM-1)

| Organism | Gene ID | UniProt ID |
|----------|-------------------------|--------------------------|
| Human | 81030 ; | Q9H171 ; |
| Mouse | | Q9QY24 ; |
| Rat | | Q8VDA5 ; |

Cellular Localization

Cytoplasm . Nucleus . Mainly cytoplasmic (PubMed:16876127, PubMed:16990255). Accumulates in the nucleus in response to influenza A virus (IAV) infection: senses IAV defective viral genomes RNA in the nucleus (By similarity). ; [Isoform 7]: Cytoplasm . Nucleus . Compared to isoform 1, a higher proportion of this isoform is localized in the nucleus. .

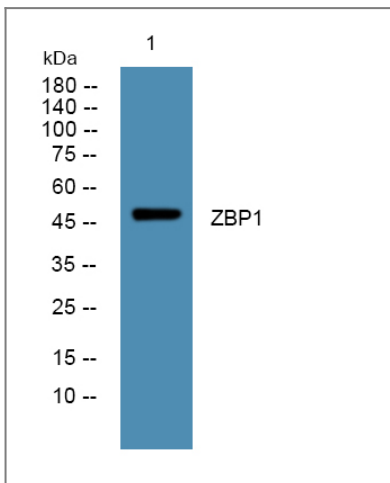
Tissue specificity

Highly expressed in lymphatic tissues including lymph node, leukocytes, tonsil, bone marrow and spleen (PubMed:11842111). Expressed to a lesser extent in thymus, lung and liver (PubMed:11842111).

Function

Alternative products:Additional isoforms seem to exist,Function:May play a role in host defense against tumors and pathogens. Binds Z-DNA.,similarity:Contains 2 DRADA repeats.,tissue specificity:Highly expressed in lymphatic tissues including lymph node, leukocytes, tonsil, bone marrow and spleen. Expressed to a lesser extent in thymus, lung and liver.,

Validation Data



Western blot analysis of lysates from SW480 cells, primary antibody was diluted at 1:1000, 4° over night

Contact information

Orders: order@immunoway.com
Support: tech@immunoway.com
Telephone: 877-594-3616 (Toll Free), 408-747-0185
Website: http://www.immunoway.com
Address: 2200 Ringwood Ave San Jose, CA 95131 USA



Please scan the QR code
to access additional
product information:
ZBP1 Rabbit pAb

For Research Use Only. Not for Use in Diagnostic Procedures.

[Antibody](#) | [ELISA Kits](#) | [Protein](#) | [Reagents](#)