

CPIN1 Rabbit pAb

CatalogNo: YN2188

Key Features

Host Species

- Rabbit

Reactivity

- Human,Rat,Mouse

Applications

- WB,ELISA

MW

- 34kD (Observed)

Isotype

- IgG

Recommended Dilution Ratios

WB 1:500-2000**ELISA 1:5000-20000**

Storage

Storage* -15°C to -25°C/1 year(Do not lower than -25°C)**Formulation** Liquid in PBS containing 50% glycerol, and 0.02% sodium azide.

Basic Information

Clonality Polyclonal

Immunogen Information

Immunogen Synthesized peptide derived from part region of human protein**Specificity** CPIN1 Polyclonal Antibody detects endogenous levels of protein.

Target Information

Gene name CIAPIN1 CUA001 PRO0915

Protein Name Anamorsin (Cytokine-induced apoptosis inhibitor 1) (Fe-S cluster assembly protein DRE2 homolog)

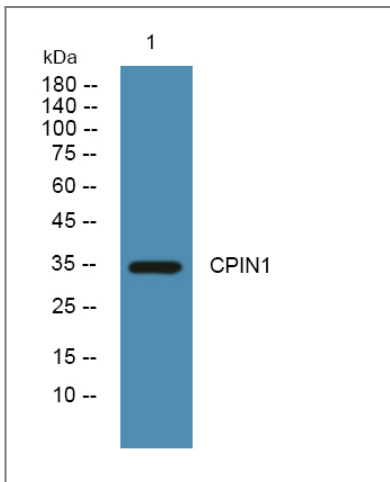
Organism	Gene ID	UniProt ID
Human	57019 ;	Q6FI81 ;
Mouse		Q8WTY4 ;
Rat		Q5XID1 ;

Cellular Localization Cytoplasm . Nucleus . Mitochondrion intermembrane space .

Tissue specificity Ubiquitously expressed. Highly expressed in heart, liver and pancreas.

Function Function:Probably required during hematopoiesis to mediate antiapoptotic effects of various cytokines. Confers resistance to apoptosis when overexpressed.,miscellaneous:'Ana-morsin' means 'anti-death molecule' in Latin.,similarity:Belongs to the anamorsin family.,tissue specificity:Ubiquitously expressed. Highly expressed in heart, liver and pancreas.,

Validation Data



Western blot analysis of lysates from SW480 cells, primary antibody was diluted at 1:1000, 4° over night

Contact information

Orders: order@immunoway.com
Support: tech@immunoway.com
Telephone: 877-594-3616 (Toll Free), 408-747-0185
Website: <http://www.immunoway.com>
Address: 2200 Ringwood Ave San Jose, CA 95131 USA



Please scan the QR code to access additional product information:
CPIN1 Rabbit pAb

