

TICN2 Rabbit pAb

CatalogNo: YN1963

Key Features

Host Species

- Rabbit

Reactivity

- Human, Mouse

Applications

- WB, ELISA

MW

- 46kD (Observed)

Isotype

- IgG

Recommended Dilution Ratios

WB 1:500-2000

ELISA 1:5000-20000

Storage

Storage* -15°C to -25°C/1 year (Do not lower than -25°C)

Formulation Liquid in PBS containing 50% glycerol, and 0.02% sodium azide.

Basic Information

Clonality Polyclonal

Immunogen Information

Immunogen Synthesized peptide derived from part region of human protein

Specificity TICN2 Polyclonal Antibody detects endogenous levels of protein.

Target Information

Gene name SPOCK2 KIAA0275 TICN2 UNQ269/PRO306

Protein Name Testican-2 (SPARC/osteonectin, CWCV, and Kazal-like domains proteoglycan 2)

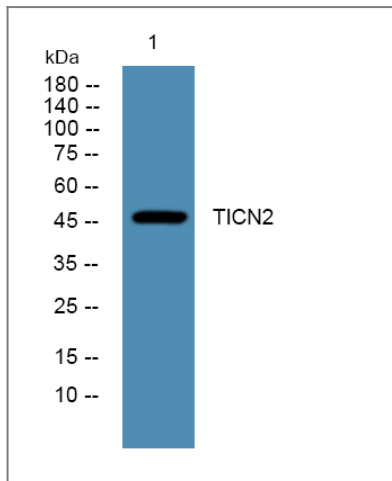
Organism	Gene ID	UniProt ID
Human	9806 ;	Q92563 ;
Mouse		Q9ER58 ;

Cellular Localization Secreted, extracellular space, extracellular matrix .

Tissue specificity Highly expressed in brain. Also found in lung and testis.

Function Function:May participate in diverse steps of neurogenesis. Binds calcium.,PTM:Contains chondroitin sulfate and heparan sulfate O-linked oligosaccharides.,similarity:Contains 1 Kazal-like domain.,similarity:Contains 1 thyroglobulin type-1 domain.,tissue specificity:Highly expressed in brain. Also found in lung and testis.,

Validation Data



Western blot analysis of lysates from PC12 cells, primary antibody was diluted at 1:1000, 4° over night

Contact information

Orders: order@immunoway.com
Support: tech@immunoway.com
Telephone: 877-594-3616 (Toll Free), 408-747-0185
Website: <http://www.immunoway.com>
Address: 2200 Ringwood Ave San Jose, CA 95131 USA



Please scan the QR code to access additional product information:
TICN2 Rabbit pAb