

## FAM3B Rabbit pAb

CatalogNo: YN1962

### Key Features

#### Host Species

- Rabbit

#### Reactivity

- Human, Mouse

#### Applications

- WB, ELISA

#### MW

- 25kD (Observed)

#### Isotype

- IgG

### Recommended Dilution Ratios

WB 1:500-2000

ELISA 1:5000-20000

### Storage

**Storage\*** -15°C to -25°C/1 year (Do not lower than -25°C)

**Formulation** Liquid in PBS containing 50% glycerol, and 0.02% sodium azide.

### Basic Information

**Clonality** Polyclonal

### Immunogen Information

**Immunogen** Synthesized peptide derived from part region of human protein AA range: 21-70

**Specificity** FAM3B Polyclonal Antibody detects endogenous levels of protein.

### Target Information

**Gene name** FAM3B C21orf11 C21orf76 PRED44 UNQ320/PRO365

**Protein Name** Protein FAM3B (Cytokine-like protein 2-21) (Pancreatic-derived factor) (PANDER)

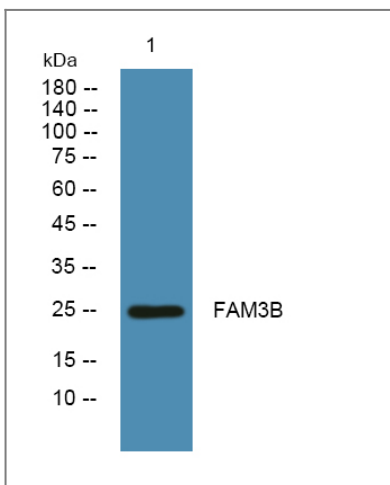
Organism	Gene ID	UniProt ID
Human	<a href="#">54097</a> ;	<a href="#">P58499</a> ;
Mouse		<a href="#">Q9D309</a> ;

**Cellular Localization** Secreted. Present in insulin secretory granules and likely cosecreted with insulin. Localized in discrete vesicular and perinuclear structure.

**Tissue specificity** Highly expressed in the pancreas. Also found in the colon, kidney, prostate, small intestine and testis.

**Function** Function:Has delayed effects on beta-cell function, inhibiting basal insulin secretion from a beta-cell line in a dose-dependent manner.,miscellaneous:2 N-termini have been observed in the mature protein: the first at Glu-30, resulting from signal peptide cleavage, the second at Ser-46.,similarity:Belongs to the FAM3 family.,subcellular location:Localized in discrete vesicular and perinuclear structure.,tissue specificity:Highly expressed in the pancreas. Also found in the colon, kidney, prostate, small intestine and testis.,

## Validation Data



Western blot analysis of lysates from KB cells, primary antibody was diluted at 1:1000, 4° over night

## Contact information

Orders: [order@immunoway.com](mailto:order@immunoway.com)  
Support: [tech@immunoway.com](mailto:tech@immunoway.com)  
Telephone: 877-594-3616 (Toll Free), 408-747-0185  
Website: <http://www.immunoway.com>  
Address: 2200 Ringwood Ave San Jose, CA 95131 USA



Please scan the QR code to access additional product information:  
**FAM3B Rabbit pAb**

