

MANS1 Rabbit pAb

CatalogNo: YN1707

Key Features

Host Species

- Rabbit

Reactivity

- Human, Mouse

Applications

- WB, ELISA

MW

- 47kD (Observed)

Isotype

- IgG

Recommended Dilution Ratios

WB 1:500-2000

ELISA 1:5000-20000

Storage

Storage* -15°C to -25°C/1 year (Do not lower than -25°C)

Formulation Liquid in PBS containing 50% glycerol, 0.5% BSA and 0.02% sodium azide.

Basic Information

Clonality Polyclonal

Immunogen Information

Immunogen Synthesized peptide derived from human protein . at AA range: 310-390

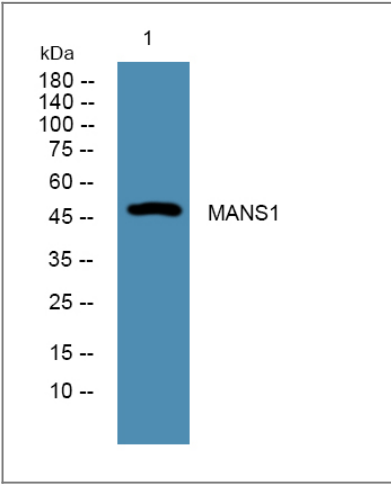
Specificity MANS1 Polyclonal Antibody detects endogenous levels of protein.

Target Information

Gene name MANSC1 LOH12CR3 UNQ316/PRO361

Protein Name	MANSC domain-containing protein 1 (Loss of heterozygosity 12 chromosomal region 3 protein)		
	Organism	Gene ID	UniProt ID
	Human	54682;	Q9H8J5;
	Mouse		Q9CR33;
Cellular Localization	Membrane ; Single-pass type I membrane protein .		
Tissue specificity	Widely expressed.		
Function	similarity:Contains 1 MANSC domain.,tissue specificity:Widely expressed.,		

Validation Data



Western blot analysis of lysates from DU145 cells, primary antibody was diluted at 1:1000, 4°over night

Contact information

Orders: order@immunoway.com
 Support: tech@immunoway.com
 Telephone: 877-594-3616 (Toll Free), 408-747-0185
 Website: <http://www.immunoway.com>
 Address: 2200 Ringwood Ave San Jose, CA 95131 USA



Please scan the QR code
 to access additional
 product information:
MANS1 Rabbit pAb