

## ARAID Rabbit pAb

CatalogNo: YN1553

### Key Features

**Host Species**

- Rabbit

**Reactivity**

- Human, Mouse

**Applications**

- WB, ELISA

**MW**

- 25kD (Observed)

**Isotype**

- IgG

### Recommended Dilution Ratios

**WB 1:500-2000****ELISA 1:5000-20000**

### Storage

**Storage\*** -15°C to -25°C/1 year (Do not lower than -25°C)**Formulation** Liquid in PBS containing 50% glycerol, and 0.02% sodium azide.

### Basic Information

**Clonality** Polyclonal

### Immunogen Information

**Immunogen** Synthesized peptide derived from human protein . at AA range: 1-80**Specificity** ARAID Polyclonal Antibody detects endogenous levels of protein.

### Target Information

**Gene name** ATRAID APR3 C2orf28 HSPC013 UNQ214/PRO240

**Protein Name** All-trans retinoic acid-induced differentiation factor (Apoptosis-related protein 3) (APR-3) (p18)

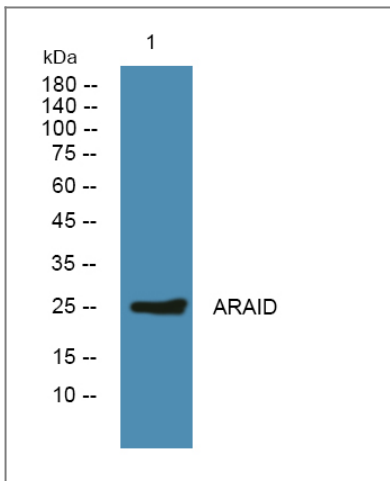
Organism	Gene ID	UniProt ID
Human	<a href="#">51374</a> ;	<a href="#">Q6UW56</a> ;
Mouse		<a href="#">Q6PGD0</a> ;

**Cellular Localization** Nucleus envelope . Cell membrane ; Single-pass membrane protein . Colocalizes with NELL1 on the nuclear envelope and the perinuclear region (PubMed:21723284).

**Tissue specificity** Weakly expressed in hematopoietic cell lines.

**Function** sequence Caution:Translation N-terminally shortened.,similarity:Contains 1 EGF-like domain.,tissue specificity:Weakly expressed in hematopoietic cell lines.,

## Validation Data



Western blot analysis of lysates from Jurkat cells, primary antibody was diluted at 1:1000, 4°over night

## Contact information

Orders: [order@immunoway.com](mailto:order@immunoway.com)  
Support: [tech@immunoway.com](mailto:tech@immunoway.com)  
Telephone: 877-594-3616 (Toll Free), 408-747-0185  
Website: <http://www.immunoway.com>  
Address: 2200 Ringwood Ave San Jose, CA 95131 USA



Please scan the QR code to access additional product information:  
**ARAID Rabbit pAb**