

CAC1G Rabbit pAb

CatalogNo: YN1529

| Key Features

Host Species

- Rabbit

Reactivity

- Human,Rat

Applications

- IHC,IF

MW

- 261kD (Observed)

Isotype

- IgG

| Recommended Dilution Ratios

IHC 1:50-300

IF 1:50-200

| Storage

Storage* -15°C to -25°C/1 year(Do not lower than -25°C)

Formulation Liquid in PBS containing 50% glycerol, and 0.02% sodium azide.

| Basic Information

Clonality Polyclonal

| Immunogen Information

Immunogen Synthesized peptide derived from human protein . at AA range: 360-440

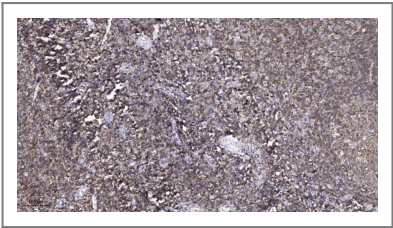
Specificity CAC1G Polyclonal Antibody detects endogenous levels of protein.

| Target Information

Gene name CACNA1G KIAA1123

Protein Name	Voltage-dependent T-type calcium channel subunit alpha-1G (Cav3.1c) (NBR13) (Voltage-gated calcium channel subunit alpha Cav3.1)		
	Organism	Gene ID	UniProt ID
	Human	8913 ;	O43497 ;
	Rat		O54898 ;
Cellular Localization	Cell membrane ; Multi-pass membrane protein . Cytoplasm .		
Tissue specificity	Highly expressed in brain, in particular in the amygdala, subthalamic nuclei, cerebellum and thalamus. Moderate expression in heart; low expression in placenta, kidney and lung. Also expressed in colon and bone marrow and in tumoral cells to a lesser extent. Highly expressed in fetal brain, but also in peripheral fetal tissues as heart, kidney and lung, suggesting a developmentally regulated expression.		
Function	<p>Alternative products:Additional isoforms seem to exist,Domain:Each of the four internal repeats contains five hydrophobic transmembrane segments (S1, S2, S3, S5, S6) and one positively charged transmembrane segment (S4). S4 segments probably represent the voltage-sensor and are characterized by a series of positively charged amino acids at every third position.,Domain:The linker region between repeat III and IV probably play a role in the inactivation of the channel. The C-terminal part may be implicated in the anchoring of the protein to the membrane, this by interfering/restricting its lateral diffusion.,Function:Voltage-sensitive calcium channels (VSCC) mediate the entry of calcium ions into excitable cells and are also involved in a variety of calcium-dependent processes, including muscle contraction, hormone or neurotransmitter release, gene expression, cell motility, cell division and cell death. The isoform alpha-1G gives rise to T-type calcium currents. T-type calcium channels belong to the "low-voltage activated (LVA)" group and are strongly blocked by mibefradil. A particularity of this type of channels is an opening at quite negative potentials and a voltage-dependent inactivation. T-type channels serve pacemaking functions in both central neurons and cardiac nodal cells and support calcium signaling in secretory cells and vascular smooth muscle. They may also be involved in the modulation of firing patterns of neurons which is important for information processing as well as in cell growth processes.,PTM:In response to raising of intracellular calcium, the T-type channels are activated by CaM-kinase II.,similarity:Belongs to the calcium channel alpha-1 subunit (TC 1.A.1.11) family.,tissue specificity:Highly expressed in brain, in particular in the amygdala, subthalamic nuclei, cerebellum and thalamus. Moderate expression in heart; low expression in placenta, kidney and lung. Also expressed in colon and bone marrow and in tumoral cells to a lesser extent. Highly expressed in fetal brain, but also in peripheral fetal tissues as heart, kidney and lung, suggesting a developmentally regulated expression.,</p>		

Validation Data



Immunohistochemical analysis of paraffin-embedded human tonsil. 1, Antibody was diluted at 1:200(4° overnight). 2, Tris-EDTA,pH9.0 was used for antigen retrieval. 3,Secondary antibody was diluted at 1:200(room temperature, 45min).

| Contact information

Orders: order@immunoway.com
Support: tech@immunoway.com
Telephone: 877-594-3616 (Toll Free), 408-747-0185
Website: <http://www.immunoway.com>
Address: 2200 Ringwood Ave San Jose, CA 95131 USA



Please scan the QR code
to access additional
product information:
CAC1G Rabbit pAb

For Research Use Only. Not for Use in Diagnostic Procedures.

[Antibody](#) | [ELISA Kits](#) | [Protein](#) | [Reagents](#)