

## CCG8 Rabbit pAb

CatalogNo: YN1524

### Key Features

#### Host Species

- Rabbit

#### Reactivity

- Human, Mouse, Rat

#### Applications

- WB, ELISA

#### MW

- 46kD (Observed)

#### Isotype

- IgG

### Recommended Dilution Ratios

WB 1:500-2000

ELISA 1:5000-20000

### Storage

**Storage\*** -15°C to -25°C/1 year (Do not lower than -25°C)

**Formulation** Liquid in PBS containing 50% glycerol, and 0.02% sodium azide.

### Basic Information

**Clonality** Polyclonal

### Immunogen Information

**Immunogen** Synthesized peptide derived from human protein . at AA range: 140-220

**Specificity** CCG8 Polyclonal Antibody detects endogenous levels of protein.

### Target Information

**Gene name** CACNG8 CACNG6

**Protein Name** Voltage-dependent calcium channel gamma-8 subunit (Neuronal voltage-gated calcium channel gamma-8 subunit) (Transmembrane AMPAR regulatory protein gamma-8) (TARP gamma-8)

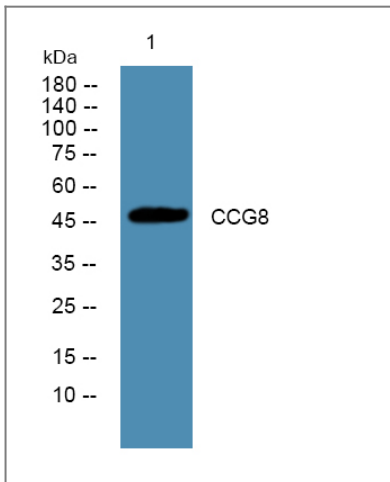
Organism	Gene ID	UniProt ID
Human	<a href="#">59283;</a>	<a href="#">Q8WXS5;</a>
Mouse		<a href="#">Q8VHW2;</a>
Rat		<a href="#">Q8VHW5;</a>

**Cellular Localization** Cell membrane ; Multi-pass membrane protein . Cell junction, synapse, postsynaptic density membrane .

**Tissue specificity** Detected in heart left ventricle.

**Function** Function:Thought to stabilize the calcium channel in an inactivated (closed) state.,similarity:Belongs to the PMP-22/EMP/MP20 family. CACNG subfamily.,subunit:The L-type calcium channel is composed of five subunits: alpha-1, alpha-2/delta, beta and gamma.,

## Validation Data



Western blot analysis of lysates from A431 cells, primary antibody was diluted at 1:1000, 4° over night

## Contact information

Orders: [order@immunoway.com](mailto:order@immunoway.com)  
Support: [tech@immunoway.com](mailto:tech@immunoway.com)  
Telephone: 877-594-3616 (Toll Free), 408-747-0185  
Website: <http://www.immunoway.com>  
Address: 2200 Ringwood Ave San Jose, CA 95131 USA



Please scan the QR code to access additional product information:  
**CCG8 Rabbit pAb**

