

UB2Q1 Rabbit pAb

CatalogNo: YN1495

Key Features

Host Species

- Rabbit

Reactivity

- Human, Mouse

Applications

- WB, ELISA

MW

- 46kD (Observed)

Isotype

- IgG

Recommended Dilution Ratios

WB 1:500-2000

ELISA 1:5000-20000

Storage

Storage* -15°C to -25°C/1 year (Do not lower than -25°C)

Formulation Liquid in PBS containing 50% glycerol, and 0.02% sodium azide.

Basic Information

Clonality Polyclonal

Immunogen Information

Immunogen Synthesized peptide derived from part region of human protein

Specificity UB2Q1 Polyclonal Antibody detects endogenous levels of protein.

Target Information

Gene name UBE2Q1 NICE5 UBE2Q PRO3094

Protein Name Ubiquitin-conjugating enzyme E2 Q1 (Protein NICE-5) (Ubiquitin carrier protein Q1) (Ubiquitin-protein ligase Q1)

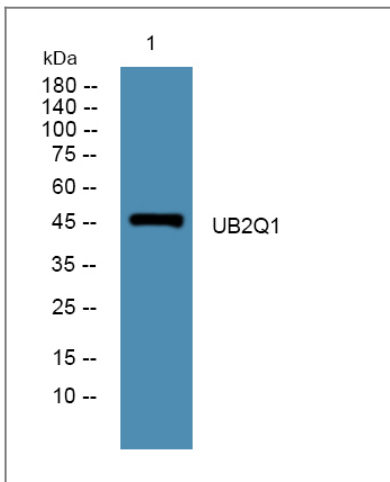
Organism	Gene ID	UniProt ID
Human	55585;	Q7Z7E8;
Mouse		Q7TSS2;

Cellular Localization Nucleus . Cell projection, filopodium . Cytoplasm, cytosol .

Tissue specificity Widely expressed.

Function Catalytic activity:ATP + ubiquitin + protein lysine = AMP + diphosphate + protein N-ubiquityllysine.,Function:Catalyzes the covalent attachment of ubiquitin to other proteins.,pathway:Protein modification; protein ubiquitination.,similarity:Belongs to the ubiquitin-conjugating enzyme family.,tissue specificity:Widely expressed.,

Validation Data



Western blot analysis of lysates from U2OS cells, primary antibody was diluted at 1:1000, 4° over night

Contact information

Orders: order@immunoway.com
Support: tech@immunoway.com
Telephone: 877-594-3616 (Toll Free), 408-747-0185
Website: <http://www.immunoway.com>
Address: 2200 Ringwood Ave San Jose, CA 95131 USA



Please scan the QR code to access additional product information:
UB2Q1 Rabbit pAb