

CCL1 Rabbit pAb

CatalogNo: YN1317

Key Features

Host Species

- Rabbit

Reactivity

- Human, Mouse

Applications

- WB, ELISA

MW

- 10kD (Observed)

Isotype

- IgG

Recommended Dilution Ratios

WB 1:500-2000

ELISA 1:5000-20000

Storage

Storage* -15°C to -25°C/1 year (Do not lower than -25°C)

Formulation Liquid in PBS containing 50% glycerol, 0.5% BSA and 0.02% sodium azide.

Basic Information

Clonality Polyclonal

Immunogen Information

Immunogen Synthesized peptide derived from human protein . at AA range: 20-100

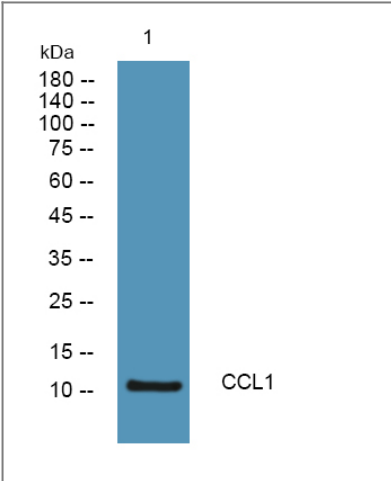
Specificity CCL1 Polyclonal Antibody detects endogenous levels of protein.

Target Information

Gene name CCL1 SCYA1

Protein Name	C-C motif chemokine 1 (Small-inducible cytokine A1) (T lymphocyte-secreted protein I-309)		
	Organism	Gene ID	UniProt ID
	Human	6346;	P22362;
	Mouse		P10146;
Cellular Localization	Secreted.		
Tissue specificity	Brain,		
Function	Function:Cytokine that is chemotactic for monocytes but not for neutrophils. Binds to CCR8.,induction:By PMA.,online information:CCL1 entry,similarity:Belongs to the intercrine beta (chemokine CC) family.,subunit:Monomer.,		

Validation Data



Western blot analysis of lysates from SH-SY5Y cells, primary antibody was diluted at 1:1000, 4°over night

Contact information

Orders: order@immunoway.com
 Support: tech@immunoway.com
 Telephone: 877-594-3616 (Toll Free), 408-747-0185
 Website: <http://www.immunoway.com>
 Address: 2200 Ringwood Ave San Jose, CA 95131 USA



Please scan the QR code
 to access additional
 product information:
CCL1 Rabbit pAb