

MUC15 Rabbit pAb

CatalogNo: YN0878 Orthogonal Validated 

Key Features

Host Species

- Rabbit

Reactivity

- Human, Mouse

Applications

- WB, ELISA

MW

- 36kD (Observed)

Isotype

- IgG

Recommended Dilution Ratios

WB 1:500-2000**ELISA 1:5000-20000**

Storage

Storage* -15°C to -25°C/1 year (Do not lower than -25°C)**Formulation** Liquid in PBS containing 50% glycerol, and 0.02% sodium azide.

Basic Information

Clonality Polyclonal

Immunogen Information

Immunogen Synthesized peptide derived from human protein . at AA range: 180-260**Specificity** MUC15 Polyclonal Antibody detects endogenous levels of protein.

Target Information

Gene name MUC15 UNQ750/PRO1481

Protein Name Mucin-15 (MUC-15)

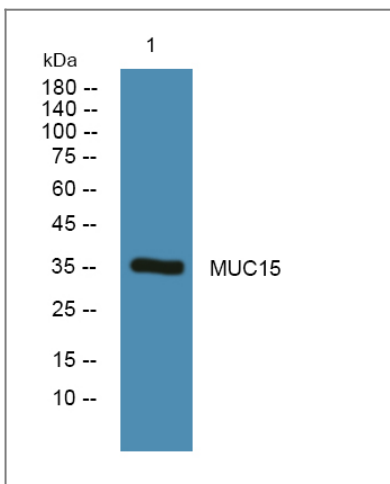
Organism	Gene ID	UniProt ID
Human	143662 ;	Q8N387 ;
Mouse		Q8C6Z1 ;

Cellular Localization [Isoform 1]: Cell membrane ; Single-pass type I membrane protein .; [Isoform 2]: Secreted .

Tissue specificity Expressed in spleen, thymus, prostate, testis, ovary, small intestine, colon, peripheral blood leukocyte, bone marrow, lymph node and lung.

Function Function:May play a role in the cell adhesion to the extracellular matrix.,PTM:Highly glycosylated (N- and O-linked carbohydrates).,sequence Caution:Translated as stop.,tissue specificity:Expressed in spleen, thymus, prostate, testis, ovary, small intestine, colon, peripheral blood leukocyte, bone marrow, lymph node and lung.,

Validation Data



Western blot analysis of lysates from U2OS cells, primary antibody was diluted at 1:1000, 4° over night

Contact information

Orders: order@immunoway.com
Support: tech@immunoway.com
Telephone: 877-594-3616 (Toll Free), 408-747-0185
Website: <http://www.immunoway.com>
Address: 2200 Ringwood Ave San Jose, CA 95131 USA



Please scan the QR code to access additional product information:
MUC15 Rabbit pAb