

## GBB1 Rabbit pAb

CatalogNo: YN0754

### Key Features

#### Host Species

- Rabbit

#### Reactivity

- Human, Mouse, Rat

#### Applications

- WB, ELISA

#### MW

- 37kD (Observed)

#### Isotype

- IgG

### Recommended Dilution Ratios

WB 1:500-2000

ELISA 1:5000-20000

### Storage

**Storage\*** -15°C to -25°C/1 year (Do not lower than -25°C)

**Formulation** Liquid in PBS containing 50% glycerol, and 0.02% sodium azide.

### Basic Information

**Clonality** Polyclonal

### Immunogen Information

**Immunogen** Synthesized peptide derived from part region of human protein

**Specificity** GBB1 Polyclonal Antibody detects endogenous levels of protein.

### Target Information

**Gene name** GNB1

**Protein Name** Guanine nucleotide-binding protein G(I)/G(S)/G(T) subunit beta-1 (Transducin beta chain 1)

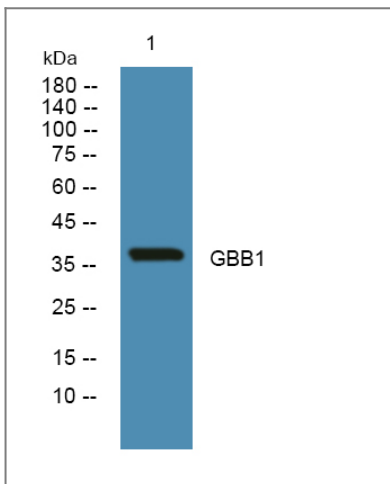
Organism	Gene ID	UniProt ID
Human	<a href="#">2782;</a>	<a href="#">P62873;</a>
Mouse		<a href="#">P62874;</a>
Rat		<a href="#">P54311;</a>

**Cellular Localization** photoreceptor inner segment,intracellular,lysosomal membrane,cytosol,heterotrimeric G-protein complex,plasma membrane,membrane,dendrite,photoreceptor outer segment membrane,myelin sheath,cell body,extracellular exosome,

**Tissue specificity** B-cell lymphoma,Brain,Fetal brain cortex,Liver,Melanoma,Muscle,Ovarian carcinoma,PC

**Function** Function:Guanine nucleotide-binding proteins (G proteins) are involved as a modulator or transducer in various transmembrane signaling systems. The beta and gamma chains are required for the GTPase activity, for replacement of GDP by GTP, and for G protein-effector interaction.,similarity:Belongs to the WD repeat G protein beta family.,similarity:Contains 7 WD repeats.,subunit:G proteins are composed of 3 units, alpha, beta and gamma. Interacts with ARHGEF18.,

## Validation Data



Western blot analysis of lysates from SW480 cells, primary antibody was diluted at 1:1000, 4° over night

## Contact information

Orders: [order@immunoway.com](mailto:order@immunoway.com)  
Support: [tech@immunoway.com](mailto:tech@immunoway.com)  
Telephone: 877-594-3616 (Toll Free), 408-747-0185  
Website: <http://www.immunoway.com>  
Address: 2200 Ringwood Ave San Jose, CA 95131 USA



Please scan the QR code to access additional product information:  
**GBB1 Rabbit pAb**

