

DHRS7 Rabbit pAb

CatalogNo: YN0638

Key Features

Host Species

- Rabbit

Reactivity

- Human, Mouse

Applications

- WB, ELISA

MW

- 37kD (Observed)

Isotype

- IgG

Recommended Dilution Ratios

WB 1:500-2000

ELISA 1:5000-20000

Storage

Storage* -15°C to -25°C/1 year (Do not lower than -25°C)

Formulation Liquid in PBS containing 50% glycerol, 0.5% BSA and 0.02% sodium azide.

Basic Information

Clonality Polyclonal

Immunogen Information

Immunogen Synthesized peptide derived from part region of human protein

Specificity DHRS7 Polyclonal Antibody detects endogenous levels of protein.

Target Information

Gene name DHRS7 DHRS7A RETSDR4 CGI-86 UNQ285/PRO3448

Protein Name Dehydrogenase/reductase SDR family member 7 (Retinal short-chain dehydrogenase/reductase 4) (retSDR4)

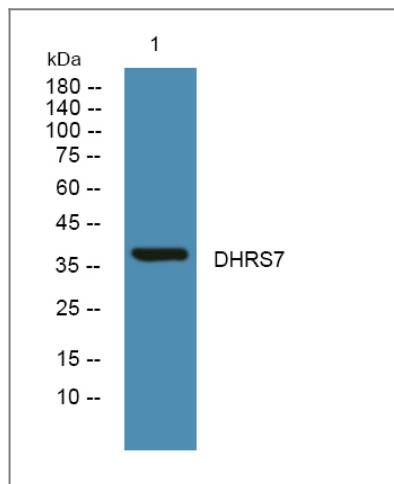
Organism	Gene ID	UniProt ID
Human	51635;	Q9Y394;
Mouse		Q9CXR1;

Cellular Localization Endoplasmic reticulum membrane . Bound to the endoplasmic reticulum membrane, possibly through a N-terminus anchor. The main bulk of the polypeptide chain was first reported to be facing toward the lumen of the endoplasmic reticulum (PubMed:24246760). However, it was later shown to be facing the cytosol (PubMed:28457967). .

Tissue specificity Found predominantly in the adrenal glands, liver, thyroid, prostate, small intestine, colon, stomach, kidney and brain (PubMed:26466768). Lower levels observed in skeletal muscle, the lung and the spleen (PubMed:26466768).

Function similarity:Belongs to the short-chain dehydrogenases/reductases (SDR) family.,

Validation Data



Western blot analysis of lysates from KB cells, primary antibody was diluted at 1:1000, 4° over night

Contact information

Orders: order@immunoway.com
Support: tech@immunoway.com
Telephone: 877-594-3616 (Toll Free), 408-747-0185
Website: <http://www.immunoway.com>
Address: 2200 Ringwood Ave San Jose, CA 95131 USA



Please scan the QR code to access additional product information:
DHR57 Rabbit pAb

