

# CNTP4 Rabbit pAb

CatalogNo: YN0620

## Key Features

### Host Species

- Rabbit

### Reactivity

- Human, Mouse

### Applications

- WB, ELISA

### MW

- 143kD (Observed)

### Isotype

- IgG

## Storage

**Storage\*** -15°C to -25°C/1 year (Do not lower than -25°C)

**Formulation** Liquid in PBS containing 50% glycerol, 0.5% BSA and 0.02% sodium azide.

## Recommended Dilution Ratios

**WB 1:500-2000**

**ELISA 1:5000-20000**

## Basic Information

**Clonality** Polyclonal

## Immunogen Information

**Immunogen** Synthesized peptide derived from part region of human protein

**Specificity** CNTP4 Polyclonal Antibody detects endogenous levels of protein.

## Target Information

**Gene name** CNTNAP4 CASPR4 KIAA1763

**Protein Name** Contactin-associated protein-like 4 (Cell recognition molecule Caspr4)

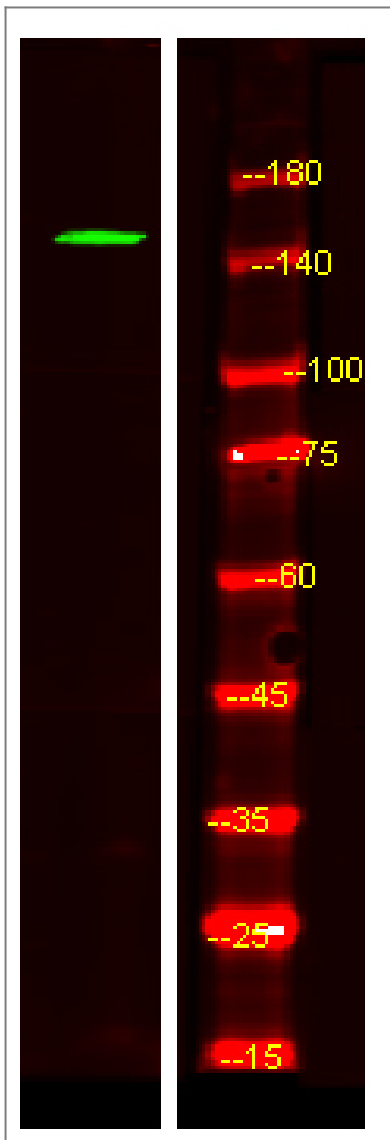
Organism	Gene ID	UniProt ID
Human	<a href="#">85445;</a>	<a href="#">Q9C0A0;</a>
Mouse		<a href="#">Q99P47;</a>

**Cellular Localization** Cell junction, synapse, presynaptic cell membrane ; Single-pass type I membrane protein . Specifically present within the presynaptic compartment of synapses. .

**Tissue specificity** Brain,Testis,

**Function** similarity:Belongs to the neurexin family.,similarity:Contains 1 F5/8 type C domain.,similarity:Contains 1 fibrinogen C-terminal domain.,similarity:Contains 2 EGF-like domains.,similarity:Contains 4 laminin G-like domains.,

## Validation Data



Western Blot analysis of HEK293 lysis, using primary antibody at 1:1000 dilution. Secondary antibody (catalog#:RS23920) was diluted at 1:10000

## Contact information

Orders: [order@immunoway.com](mailto:order@immunoway.com)  
Support: [tech@immunoway.com](mailto:tech@immunoway.com)  
Telephone: 877-594-3616 (Toll Free), 408-747-0185  
Website: <http://www.immunoway.com>  
Address: 2200 Ringwood Ave San Jose, CA 95131 USA



Please scan the QR code  
to access additional  
product information:  
**CNTP4 Rabbit pAb**

---

For Research Use Only. Not for Use in Diagnostic Procedures.

[Antibody](#) | [ELISA Kits](#) | [Protein](#) | [Reagents](#)