

C1T9B Rabbit pAb

CatalogNo: YN0613

| Key Features

Host Species

- Rabbit

Reactivity

- Human

Applications

- WB,ELISA

MW

- 36kD (Observed)

Isotype

- IgG

| Recommended Dilution Ratios

WB 1:500-2000

ELISA 1:5000-20000

| Storage

Storage* -15°C to -25°C/1 year(Do not lower than -25°C)

Formulation Liquid in PBS containing 50% glycerol, and 0.02% sodium azide.

| Basic Information

Clonality Polyclonal

| Immunogen Information

Immunogen Synthesized peptide derived from part region of human protein

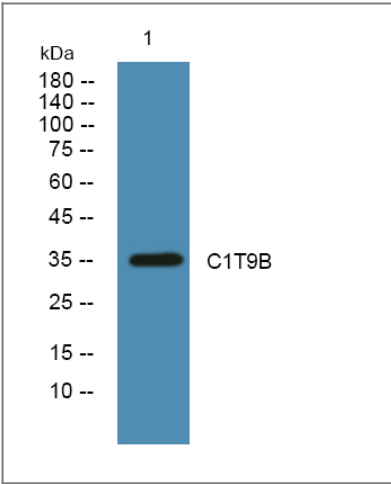
Specificity C1T9B Polyclonal Antibody detects endogenous levels of protein.

| Target Information

Gene name C1QTNF9B

Protein Name	Complement C1q and tumor necrosis factor-related protein 9B (C1q/TNF-related protein 9B) (CTRP9B) (Complement C1q and tumor necrosis factor-related protein 9-like)		
	Organism	Gene ID	UniProt ID
	Human	387911 ;	B2RNN3 ;
Cellular Localization	Secreted . Heteromeric complex formation with CTRP9A or ADIPOQ is required for secretion, otherwise, it is retained in the endoplasmic reticulum.		
Tissue specificity	Expressed at low levels. Not expressed in adipose tissues.		
Function	similarity:Contains 1 C1q domain.,similarity:Contains 3 collagen-like domains.,		

Validation Data



Western blot analysis of lysates from Jurkat cells, primary antibody was diluted at 1:1000, 4°over night

Contact information

Orders: order@immunoway.com
 Support: tech@immunoway.com
 Telephone: 877-594-3616 (Toll Free), 408-747-0185
 Website: <http://www.immunoway.com>
 Address: 2200 Ringwood Ave San Jose, CA 95131 USA



Please scan the QR code
 to access additional
 product information:
C1T9B Rabbit pAb