

## CHSTB Rabbit pAb

CatalogNo: YN0545

### | Key Features

#### Host Species

- Rabbit

#### Reactivity

- Human, Mouse, Rat

#### Applications

- WB, ELISA

#### MW

- 38kD (Observed)

#### Isotype

- IgG

### | Recommended Dilution Ratios

**WB 1:500-2000**

**ELISA 1:5000-20000**

### | Storage

**Storage\*** -15°C to -25°C/1 year (Do not lower than -25°C)

**Formulation** Liquid in PBS containing 50% glycerol, 0.5% BSA and 0.02% sodium azide.

### | Basic Information

**Clonality** Polyclonal

### | Immunogen Information

**Immunogen** Synthesized peptide derived from part region of human protein

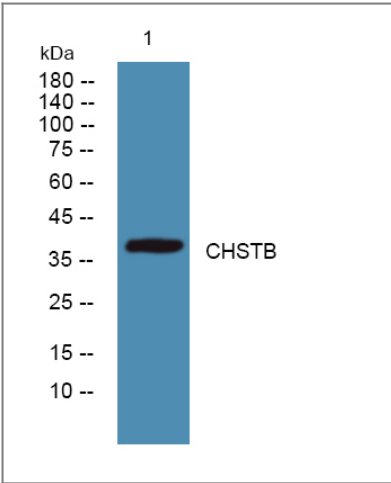
**Specificity** CHSTB Polyclonal Antibody detects endogenous levels of protein.

### | Target Information

**Gene name** CHST11

<b>Protein Name</b>	Carbohydrate sulfotransferase 11 (Chondroitin 4-O-sulfotransferase 1) (Chondroitin 4-sulfotransferase 1) (C4S-1) (C4ST-1) (C4ST1)		
	<b>Organism</b>	<b>Gene ID</b>	<b>UniProt ID</b>
	Human	<a href="#">50515</a> ;	<a href="#">Q9NPF2</a> ;
	Mouse		<a href="#">Q9JME2</a> ;
	Rat		<a href="#">P69478</a> ;
<b>Cellular Localization</b>	Golgi apparatus membrane ; Single-pass type II membrane protein .		
<b>Tissue specificity</b>	Widely expressed. Highly expressed in spleen, thymus, bone marrow, peripheral blood leukocytes, lymph node, heart, brain, lung and placenta.		
<b>Function</b>	Catalytic activity:3'-phosphoadenylyl sulfate + chondroitin = adenosine 3',5'-bisphosphate + chondroitin 4'-sulfate.,Disease:A chromosomal aberration involving CHST11 is found in B-cell chronic lymphocytic leukemias. Translocation t(12;14)(q23;q32) with IgH.,Function:Catalyzes the transfer of sulfate to position 4 of the N-acetylgalactosamine (GalNAc) residue of chondroitin. Chondroitin sulfate constitutes the predominant proteoglycan present in cartilage and is distributed on the surfaces of many cells and extracellular matrices. Can also sulfate Gal residues in desulfated dermatan sulfate. Preferentially sulfates in GlcA->GalNAc unit than in IdoA->GalNAc unit. Does not form 4, 6-di-O-sulfated GalNAc when chondroitin sulfate C is used as an acceptor.,PTM:N-glycosylated; required for activity and stability.,similarity:Belongs to the sulfotransferase 2 family.,tissue specificity:Widely expressed. Highly expressed in spleen, thymus, bone marrow, peripheral blood leukocytes, lymph node, heart, brain, lung and placenta.,		

Validation Data



Western blot analysis of lysates from K562 cells, primary antibody was diluted at 1:1000, 4°over night

Contact information

Orders: order@immunoway.com  
Support: tech@immunoway.com  
Telephone: 877-594-3616 (Toll Free), 408-747-0185  
Website: http://www.immunoway.com  
Address: 2200 Ringwood Ave San Jose, CA 95131 USA



Please scan the QR code  
to access additional  
product information:  
**CHSTB Rabbit pAb**

---

For Research Use Only. Not for Use in Diagnostic Procedures.

[Antibody](#) | [ELISA Kits](#) | [Protein](#) | [Reagents](#)