

RL35A Rabbit pAb

CatalogNo: YN0380

Key Features

Host Species

- Rabbit

Reactivity

- Human, Mouse, Rat

Applications

- WB, ELISA

MW

- 12kD (Observed)

Isotype

- IgG

Recommended Dilution Ratios

WB 1:500-2000

ELISA 1:5000-20000

Storage

Storage* -15°C to -25°C/1 year (Do not lower than -25°C)

Formulation Liquid in PBS containing 50% glycerol, and 0.02% sodium azide.

Basic Information

Clonality Polyclonal

Immunogen Information

Immunogen Synthesized peptide derived from human protein . at AA range: 1-80

Specificity RL35A Polyclonal Antibody detects endogenous levels of protein.

Target Information

Gene name RPL35A GIG33

Protein Name 60S ribosomal protein L35a (Cell growth-inhibiting gene 33 protein)

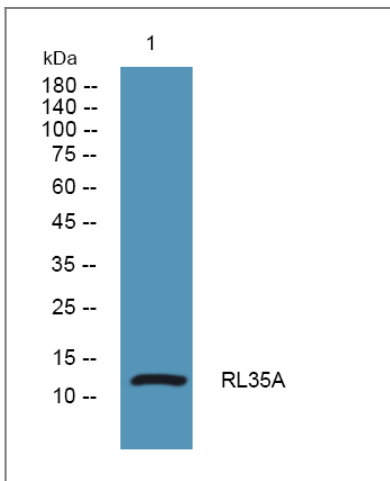
Organism	Gene ID	UniProt ID
Human	6165 ;	P18077 ;
Mouse		O55142 ;
Rat		P04646 ;

Cellular Localization mitochondrion,cytosol,ribosome,membrane,cytosolic large ribosomal subunit,extracellular matrix,extracellular exosome,

Tissue specificity Bone marrow,Colon,Ovary,Placenta,

Function Disease:Defects in RPL35A are the cause of Diamond-Blackfan anemia type 5 (DBA5) [MIM:612528]. DBA5 is a form of Diamond-Blackfan anemia, a congenital non-regenerative hypoplastic anemia that usually presents early in infancy. Diamond-Blackfan anemia is characterized by a moderate to severe macrocytic anemia, erythroblastopenia, and an increased risk of malignancy. 30 to 40% of Diamond-Blackfan anemia patients present with short stature and congenital anomalies, the most frequent being craniofacial (Pierre-Robin syndrome and cleft palate), thumb and urogenital anomalies.,Function:Required for the proliferation and viability of hematopoietic cells. Plays a role in 60S ribosomal subunit formation. The protein was found to bind to both initiator and elongator tRNAs and consequently was assigned to the P site or P and A site.,miscellaneous:Knockdown of RPL35A in hematopoietic cell lines results in decreased cell proliferation, increased apoptosis, decreased biogenesis of mature 60S ribosomal subunit, and abnormal processing of large ribosomal subunit rRNA.,similarity:Belongs to the ribosomal protein L35Ae family.,

Validation Data



Western blot analysis of lysates from SW480 cells, primary antibody was diluted at 1:1000, 4° over night

Contact information

Orders: order@immunoway.com
Support: tech@immunoway.com
Telephone: 877-594-3616 (Toll Free), 408-747-0185
Website: http://www.immunoway.com
Address: 2200 Ringwood Ave San Jose, CA 95131 USA



Please scan the QR code
to access additional
product information:
RL35A Rabbit pAb

For Research Use Only. Not for Use in Diagnostic Procedures.

[Antibody](#) | [ELISA Kits](#) | [Protein](#) | [Reagents](#)