

CD320 Rabbit pAb

CatalogNo: YN0171

Key Features

Host Species

- Rabbit

Reactivity

- Human, Mouse, Rat

Applications

- WB, ELISA

MW

- 31kD (Observed)

Isotype

- IgG

Recommended Dilution Ratios

WB 1:500-2000

ELISA 1:5000-20000

Storage

Storage* -15°C to -25°C/1 year (Do not lower than -25°C)

Formulation Liquid in PBS containing 50% glycerol, and 0.02% sodium azide.

Basic Information

Clonality Polyclonal

Immunogen Information

Immunogen Synthesized peptide derived from human protein . at AA range: 100-180

Specificity CD320 Polyclonal Antibody detects endogenous levels of protein.

Target Information

Gene name CD320 8D6A UNQ198/PRO224

Protein Name CD320 antigen (8D6 antigen) (FDC-signaling molecule 8D6) (FDC-SM-8D6) (Transcobalamin receptor) (TCbIR) (CD antigen CD320)

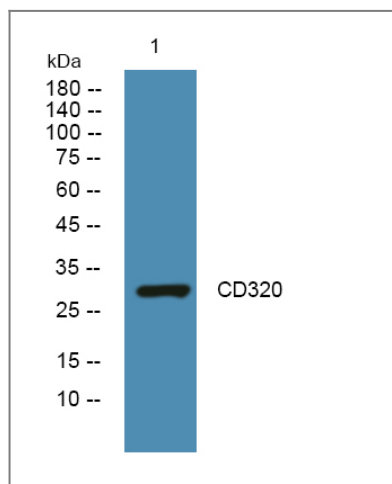
Organism	Gene ID	UniProt ID
Human	51293 ;	Q9NPF0 ;
Mouse		Q9Z1P5 ;
Rat		Q5HZW5 ;

Cellular Localization Cell membrane ; Single-pass type I membrane protein .

Tissue specificity Detected in the germinal center (GC) of lymphoid follicles (at protein level) (PubMed:11418631). Expressed abundantly on follicular dendritic cells (FDCs) (PubMed:10727470).

Function Function:Germinal center-B (GC-B) cells differentiate into memory B-cells and plasma cells (PC) through interaction with T-cells and follicular dendritic cells (FDC). CD320 augments the proliferation of PC precursors generated by IL-10. Receptor for the cellular uptake of transcobalamin bound cobalamin.,similarity:Contains 2 LDL-receptor class A domains.,tissue specificity:Expressed abundantly on follicular dendritic cells (FDCs),,

Validation Data



Western blot analysis of lysates from SW480 cells, primary antibody was diluted at 1:1000, 4° over night

Contact information

Orders: order@immunoway.com
Support: tech@immunoway.com
Telephone: 877-594-3616 (Toll Free), 408-747-0185
Website: <http://www.immunoway.com>
Address: 2200 Ringwood Ave San Jose, CA 95131 USA



Please scan the QR code to access additional product information:
CD320 Rabbit pAb

