

LONP1 (PT1755R) PT™ Rabbit mAb

CatalogNo: YM9598 **Recombinant** 

Key Features

Host Species

- Rabbit

Reactivity

- Human, Mouse, Rat

Applications

- WB, IHC, IF, IP, ELISA

MW

- 106kD (Calculated)
- 106kD (Observed)

Isotype

- IgG, Kappa

Storage

Storage* -15°C to -25°C/1 year (Do not lower than -25°C)**Formulation** PBS, 50% glycerol, 0.05% Proclin 300, 0.05% BSA

Recommended Dilution Ratios

IHC 1:200-1:1000**WB 1:2000-1:10000****IF 1:200-1:1000****ELISA 1:5000-1:20000****IP 1:50-1:200**

Basic Information

Clonality Monoclonal**Clone Number** PT1755R

Immunogen Information

Specificity Endogenous

Target Information

Gene name LONP1 PRSS15

Protein Name LONM

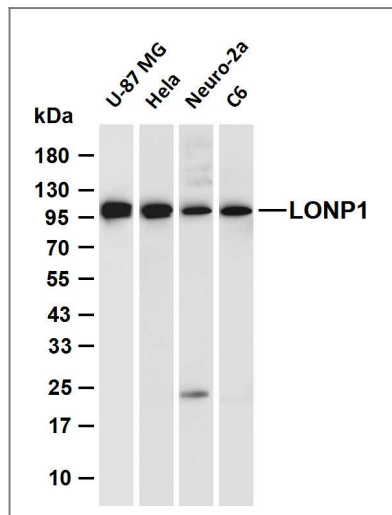
Organism	Gene ID	UniProt ID
Human	9361 ;	P36776 ;
Mouse	74142 ;	Q8CGK3 ;
Rat	170916 ;	Q924S5 ;

Cellular Localization Mitochondrion matrix .

Tissue specificity Duodenum, heart, lung and liver, but not thymus.

Function Function:Required for intramitochondrial proteolysis. Catalyzes the initial steps of protein degradation. Hydrolyzes ATP and degrades protein and peptide substrates in an ATP-dependent manner. Binds to single-stranded but not to double-stranded DNA.,similarity:Belongs to the peptidase S16 family.,similarity:Contains 1 Lon domain.,tissue specificity:Duodenum, heart, lung and liver, but not thymus.,

Validation Data



Various whole cell lysates were separated by 4-20% SDS-PAGE, and the membrane was blotted with anti-LONP1 (PT1755R) antibody. The HRP-conjugated Goat anti-Rabbit IgG (H + L) antibody was used to detect the antibody. Lane 1: U-87 MG Lane 2: HeLa Lane 3: Neuro-2a Lane 4: C6 Predicted band size: 106kDa Observed band size: 106kDa

Contact information

Orders: order@immunoway.com
Support: tech@immunoway.com
Telephone: 877-594-3616 (Toll Free), 408-747-0185
Website: http://www.immunoway.com
Address: 2200 Ringwood Ave San Jose, CA 95131 USA



Please scan the QR code
to access additional
product information:
LONP1 (PT1755R)
PT™ Rabbit mAb

For Research Use Only. Not for Use in Diagnostic Procedures.

[Antibody](#) | [ELISA Kits](#) | [Protein](#) | [Reagents](#)