

OXGR1 (PT1104R) PT® Rabbit mAb

CatalogNo: YM8926 **Recombinant** 

Key Features

Host Species

- Rabbit

Reactivity

- Human, Mouse, Rat

Applications

- WB, ICC/IF, FC, IP

MW

- 37kDa (Calculated)
- 37kDa (Observed)

Isotype

- IgG, Kappa

Recommended Dilution Ratios

WB 1:1000-1:5000**IF 1:200-1:1000****IP 1:50-1:200****FC 1:100-1:500**

Storage

Storage* -15°C to -25°C/1 year (Do not lower than -25°C)**Formulation** PBS, 50% glycerol, 0.05% Proclin 300, 0.05% BSA

Basic Information

Clonality Monoclonal**Clone Number** PT1104R

Immunogen Information

Specificity Endogenous

Target Information

Gene name OXGR1 GPR80 GPR99 P2RY15 P2Y15

Protein Name 2-oxoglutarate receptor 1 (Alpha-ketoglutarate receptor 1) (G-protein coupled receptor 80) (G-protein coupled receptor 99) (P2Y purinoceptor 15) (P2Y15) (P2Y-like GPCR) (P2Y-like nucleotide receptor)

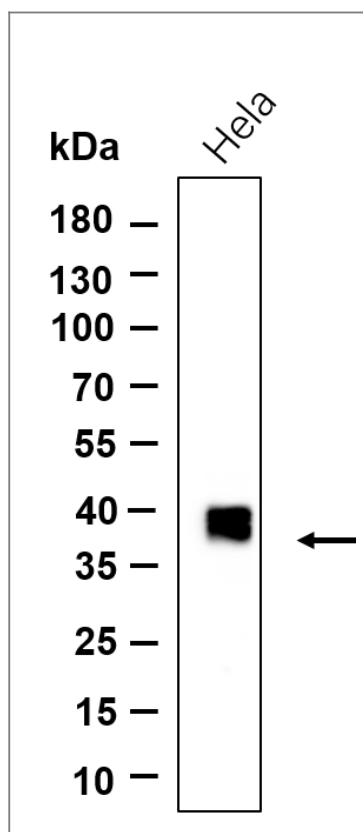
Organism	Gene ID	UniProt ID
Human	27199 ;	Q96P68 ;
Mouse		Q6IYF8 ;
Rat		Q6Y1R5 ;

Cellular Localization Cell membrane; Multi-pass membrane protein.

Tissue specificity Detected in kidney and, to a lower extent, in placenta. Not detected in brain tissues including the frontal cortex, caudate putamen, thalamus, hypothalamus, hippocampus or pons.

Function Caution:Was originally (Ref.5) thought to be a P2Y receptor.,Function:Receptor for alpha-ketoglutarate. Seems to act exclusively through a G(q)-mediated pathway.,similarity:Belongs to the G-protein coupled receptor 1 family.,tissue specificity:Detected in kidney and, to a lower extend, in placenta. Not detected in brain tissues including the frontal cortex, caudate putamen, thalamus, hypothalamus, hippocampus or pons.,

Validation Data



Western blot analysis of lysates from HeLa cell, primary antibody was diluted at 1:1000, 4° over night, Dylight 800 secondary antibody(Immunoway:RS23920)was diluted at 1:10000, 37° 1hour.

| Contact information

Orders: order@immunoway.com
Support: tech@immunoway.com
Telephone: 877-594-3616 (Toll Free), 408-747-0185
Website: <http://www.immunoway.com>
Address: 2200 Ringwood Ave San Jose, CA 95131 USA



Please scan the QR code to access additional product information:
OXGR1 (PT1104R)
PT® Rabbit mAb

For Research Use Only. Not for Use in Diagnostic Procedures.

[Antibody](#) | [ELISA Kits](#) | [Protein](#) | [Reagents](#)