

## GPR182 (PT1092R) PT® Rabbit mAb

CatalogNo: YM8914 **Recombinant** 

### Key Features

#### Host Species

- Rabbit

#### Reactivity

- Human, Mouse

#### Applications

- WB

#### MW

- 44kDa (Calculated)
- 44kDa (Observed)

#### Isotype

- IgG,Kappa

### Recommended Dilution Ratios

**WB 1:1000-1:5000**

### Storage

**Storage\*** -15°C to -25°C/1 year(Do not lower than -25°C)

**Formulation** PBS, 50% glycerol, 0.05% Proclin 300, 0.05%BSA

### Basic Information

**Clonality** Monoclonal

**Clone Number** PT1092R

### Immunogen Information

**Specificity** Endogenous

### Target Information

**Gene name** GPR182 ADMR

**Protein Name** G-protein coupled receptor 182

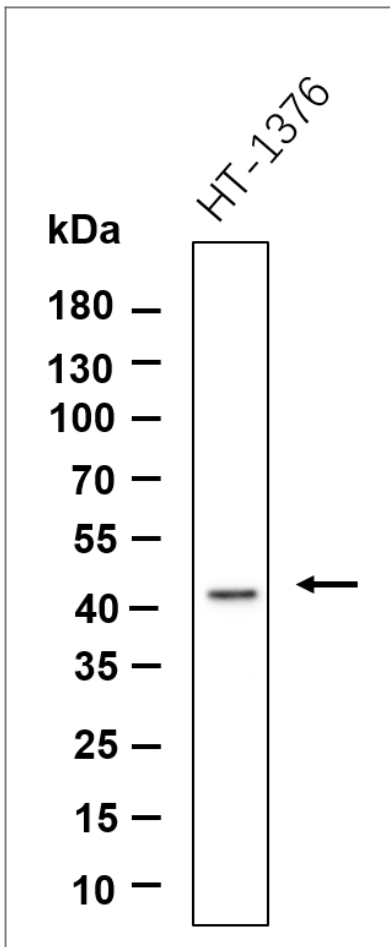
| Organism | Gene ID                 | UniProt ID               |
|----------|-------------------------|--------------------------|
| Human    | <a href="#">11318</a> ; | <a href="#">O15218</a> ; |
| Mouse    |                         | <a href="#">P43142</a> ; |
| Rat      |                         | <a href="#">P31392</a> ; |

**Cellular Localization** Cell membrane; Multi-pass membrane protein.

**Tissue specificity** Highly expressed in heart, skeletal muscle, immune system, adrenal gland and liver.

**Function** Caution:Was originally (PubMed:9367907) thought to be a receptor for adrenomedullin.,Function:Orphan receptor.,similarity:Belongs to the G-protein coupled receptor 1 family.,tissue specificity:Highly expressed in heart, skeletal muscle, immune system, adrenal gland and liver.,

## Validation Data



Western blot analysis of lysates from HT-1376 cell, primary antibody was diluted at 1:1000, 4° over night, Dylight 800 secondary antibody(Immunoway:RS23920)was diluted at 1:10000, 37° 1hour.

## | Contact information

Orders: order@immunoway.com  
Support: tech@immunoway.com  
Telephone: 877-594-3616 (Toll Free), 408-747-0185  
Website: <http://www.immunoway.com>  
Address: 2200 Ringwood Ave San Jose, CA 95131 USA



Please scan the QR code to access additional product information:  
**GPR182 (PT1092R)**  
**PT® Rabbit mAb**

---

For Research Use Only. Not for Use in Diagnostic Procedures.

[Antibody](#) | [ELISA Kits](#) | [Protein](#) | [Reagents](#)