

STML2 (PT0947R) PT® Rabbit mAb

CatalogNo: YM8702 **Recombinant** 

Key Features

Host Species

- Rabbit

Reactivity

- Human, Mouse, Rat

Applications

- WB, IF, IP, ELISA

MW

- 39kD (Calculated)
- 39kD (Observed)

Isotype

- IgG, Kappa

Recommended Dilution Ratios

WB 1:2000-1:10000**IF 1:200-1:1000****ELISA 1:5000-1:20000****IP 1:50-1:200**

Storage

Storage* -15°C to -25°C/1 year (Do not lower than -25°C)**Formulation** PBS, 50% glycerol, 0.05% Proclin 300, 0.05% BSA

Basic Information

Clonality Monoclonal**Clone Number** PT0947R

Immunogen Information

Specificity Endogenous

Target Information

Gene name STOML2 SLP2 HSPC108

Protein Name Stomatin-like protein 2 (SLP-2) (EPB72-like protein 2)

Organism	Gene ID	UniProt ID
Human	30968 ;	Q9UJZ1 ;
Mouse	66592 ;	Q99JB2 ;
Rat	66592 ;	Q4FZT0 ;

Cellular Localization

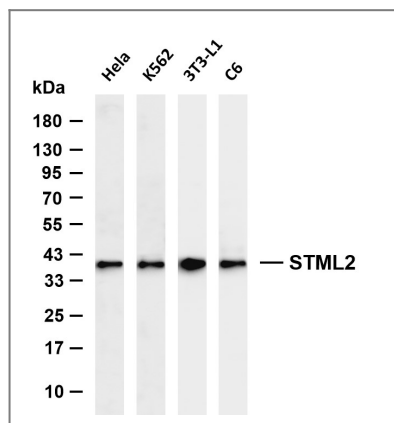
Cell membrane ; Peripheral membrane protein . Mitochondrion . Mitochondrion inner membrane ; Lipid-anchor . Mitochondrion intermembrane space . Membrane raft . Cytoplasm, cytoskeleton . Behaves as an integral membrane protein of the mitochondrion despite the absence of a detectable transmembrane domain (PubMed:21746876). Also associates with the actin cytoskeleton and membrane rafts in activated T-cells (PubMed:18641330, PubMed:10713127). A minor pool is associated with the plasma membrane and is enriched at the immunological synapse in activated T-cells (PubMed:22623988). .

Tissue specificity Ubiquitously expressed at low levels. Expressed in lymphoid tissues (at protein level).

Function

Mitochondrial protein that probably regulates the biogenesis and the activity of mitochondria. Stimulates cardiolipin biosynthesis, binds cardiolipin-enriched membranes where it recruits and stabilizes some proteins including prohibitin and may therefore act in the organization of functional microdomains in mitochondrial membranes. Through regulation of the mitochondrial function may play a role into several biological processes including cell migration, cell proliferation, T-cell activation, calcium homeostasis and cellular response to stress. May play a role in calcium homeostasis through negative regulation of calcium efflux from mitochondria. Required for mitochondrial hyperfusion a pro-survival cellular response to stress which results in increased ATP production by mitochondria. May also regulate the organization of functional domains at the plasma membrane and play a role in T-cell activation through association with the T-cell receptor signaling complex and its regulation.

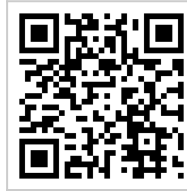
Validation Data



Various whole cell lysates were separated by 4-20% SDS-PAGE, and the membrane was blotted with anti-STML2 (PT0947R) antibody. The HRP-conjugated Goat anti-Rabbit IgG (H + L) antibody was used to detect the antibody. Lane 1: HeLa Lane 2: K562 Lane 3: 3T3-L1 Lane 4: C6 Predicted band size: 39kDa Observed band size: 39kDa

| Contact information

Orders: order@immunoway.com
Support: tech@immunoway.com
Telephone: 877-594-3616 (Toll Free), 408-747-0185
Website: <http://www.immunoway.com>
Address: 2200 Ringwood Ave San Jose, CA 95131 USA



Please scan the QR code to access additional product information:
STML2 (PT0947R)
PT® Rabbit mAb

For Research Use Only. Not for Use in Diagnostic Procedures.

[Antibody](#) | [ELISA Kits](#) | [Protein](#) | [Reagents](#)