

# Jun/JunD (Phospho Ser73/Ser100) (PT0912R) PT™ Rabbit mAb

CatalogNo: YM8681 **Recombinant** 

## Key Features

### Host Species

- Rabbit

### Reactivity

- Human, Mouse, Rat

### Applications

- WB, IHC, IF, IP, ELISA

### MW

- 35kD, 36kD (Calculated)  
42kD, 48kD (Observed)

### Isotype

- IgG, Kappa

## Recommended Dilution Ratios

IHC 1:200-1:1000

WB 1:2000-1:10000

IF 1:200-1:1000

ELISA 1:5000-1:20000

IP 1:50-1:200

## Storage

**Storage\*** -15°C to -25°C/1 year (Do not lower than -25°C)

**Formulation** PBS, 50% glycerol, 0.05% Proclin 300, 0.05% BSA

## Basic Information

**Clonality** Monoclonal

**Clone Number** PT0912R

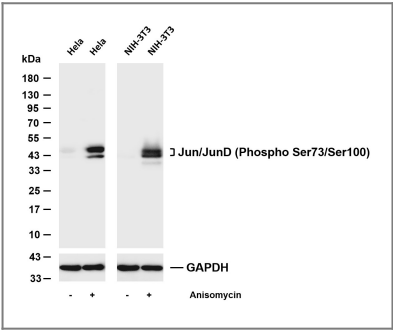
## Immunogen Information

**Specificity** Phospho-Jun/JunD (Ser73/Ser100) Antibody detects endogenous levels of c JUN protein only when phosphorylated at S73/100. The name of modified sites may be influenced by many factors, such as species (the modified site was not originally found in human samples) and the change of protein sequence (the previous protein sequence is incomplete, and the protein sequence may be prolonged with the development of protein sequencing technology). When naming, we will use the "numbers" in historical reference to keep the sites consistent with the reports. The antibody binds to the following modification sequence (lowercase letters are modification sites): CSSVs

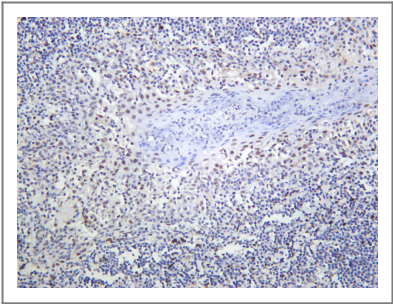
## Target Information

Gene name	JUN/JUND		
Protein Name	Transcription factor AP-1;jun;c-jun; AP-1; Transcription factor jun-D		
	Organism	Gene ID	UniProt ID
	Human	<a href="#">3725</a> ; <a href="#">3727</a> ;	<a href="#">P05412</a> ; <a href="#">P17535</a> ;
	Mouse	<a href="#">16476</a> ; <a href="#">16478</a> ;	
	Rat	<a href="#">24516</a> ; <a href="#">24518</a> ;	<a href="#">P17325</a> ; <a href="#">P52909</a> ;
Cellular Localization	Nucleus.		
Tissue specificity	Expressed in the developing and adult prostate and prostate cancer cells.		
Function	Function:Transcription factor that recognizes and binds to the enhancer heptamer motif 5'-TGA[CG]TCA-3'. ,PTM:Phosphorylation enhances the transcriptional activity. Phosphorylated by PRKDC.,similarity:Belongs to the bZIP family.,similarity:Belongs to the bZIP family. Jun subfamily.,similarity:Contains 1 bZIP domain.,subunit:Heterodimer with either FOS or BATF3. Interacts with HIVEP3 (By similarity). Interacts with SMAD3/SMAD4 heterodimers. Interacts with MYBBP1A, SPIB and TCF20. Interacts with COPS5; indirectly leading to its phosphorylation. Interacts with DSIPI; this interaction inhibits the binding of active AP1 to its target DNA.,		

## Validation Data



Various whole cell lysates were separated by 4-20% SDS-PAGE, and the membrane was blotted with anti-Jun/JunD (Phospho Ser73/Ser100) antibody. The HRP-conjugated Goat anti-Rabbit IgG (H + L) antibody was used to detect the antibody. Lane 1: HeLa Lane 2: HeLa was treated with Anisomycin(250ng/ml) for 30 minutes Lane 3: NIH-3T3 Lane 4: NIH-3T3 was treated with Anisomycin(25ug/ml) for 30 minutes Predicted band size: 35,36kDa Observed band size: 42,48kDa



Human tonsil was stained with anti-Jun/JunD (Phospho Ser73/Ser100) Rabbit antibody

## | Contact information

Orders: order@immunoway.com  
Support: tech@immunoway.com  
Telephone: 877-594-3616 (Toll Free), 408-747-0185  
Website: <http://www.immunoway.com>  
Address: 2200 Ringwood Ave San Jose, CA 95131 USA



Please scan the QR code to access additional product information:

**Jun/JunD (Phospho Ser73/Ser100) (PT0912R) PT™ Rabbit mAb**

---

For Research Use Only. Not for Use in Diagnostic Procedures.

[Antibody](#) | [ELISA Kits](#) | [Protein](#) | [Reagents](#)