

## P70 S6 Kinase (1C7) Mouse mAb

CatalogNo: YM3602

### Key Features

#### Host Species

- Mouse

#### Reactivity

- Human,Rat,Mouse

#### Applications

- IHC,IF

#### MW

- 70,85kD (Observed)

### Recommended Dilution Ratios

IHC 1:100-200

IF 1:50-200

### Storage

**Storage\*** -15°C to -25°C/1 year(Do not lower than -25°C)

**Formulation** Liquid in PBS containing 50% glycerol, 0.5% BSA and 0.02% sodium azide.

### Basic Information

**Clonality** Monoclonal

**Clone Number** 1C7

### Immunogen Information

**Immunogen** Recombinant Protein of P70 S6 Kinase of RPS6KB1

**Specificity** P70 S6 Kinase protein detects endogenous levels of RPS6KB1

### Target Information

**Gene name** RPS6KB1 STK14A P70S6K

**Protein Name** Ribosomal protein S6 kinase beta-1

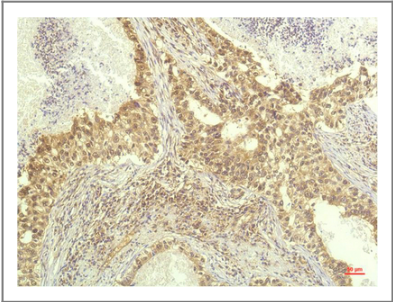
| Organism | Gene ID                | UniProt ID               |
|----------|------------------------|--------------------------|
| Human    | <a href="#">6198</a> ; | <a href="#">P23443</a> ; |
| Mouse    |                        | <a href="#">Q8BSK8</a> ; |
| Rat      |                        | <a href="#">P67999</a> ; |

**Cellular Localization** Cell junction, synapse, synaptosome . Mitochondrion outer membrane. Mitochondrion. Colocalizes with URI1 at mitochondrion.; [Isoform Alpha I]: Nucleus. Cytoplasm.; [Isoform Alpha II]: Cytoplasm.

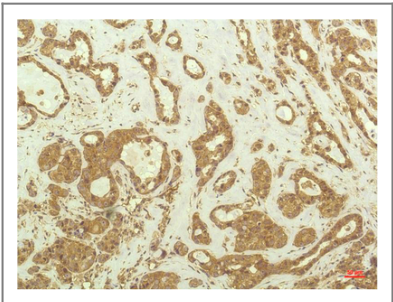
**Tissue specificity** Widely expressed.

**Function** Catalytic activity:ATP + a protein = ADP + a phosphoprotein.,enzyme regulation:Activation by serine/threonine phosphorylation and protein kinase C, inactivated by type 2A phosphatase.,Function:Phosphorylates specifically ribosomal protein S6 in response to insulin or several classes of mitogens.,similarity:Belongs to the protein kinase superfamily.,similarity:Belongs to the protein kinase superfamily. AGC Ser/Thr protein kinase family. S6 kinase subfamily.,similarity:Contains 1 AGC-kinase C-terminal domain.,similarity:Contains 1 protein kinase domain.,subunit:Interacts with PPP1R9A/neurabin-1.,tissue specificity:Widely expressed.,

## Validation Data



Immunohistochemical analysis of paraffin-embedded Human Lung Carcinoma Tissue using P70 S6 Kinase Mouse mAb diluted at 1:200.



Immunohistochemical analysis of paraffin-embedded Human Breast Carcinoma Tissue using P70 S6 Kinase Mouse mAb diluted at 1:200.

## Contact information

Orders: [order@immunoway.com](mailto:order@immunoway.com)  
Support: [tech@immunoway.com](mailto:tech@immunoway.com)  
Telephone: 877-594-3616 (Toll Free), 408-747-0185  
Website: <http://www.immunoway.com>  
Address: 2200 Ringwood Ave San Jose, CA 95131 USA



Please scan the QR code  
to access additional  
product information:  
**P70 S6 Kinase (1C7)**  
**Mouse mAb**

---

For Research Use Only. Not for Use in Diagnostic Procedures.

[Antibody](#) | [ELISA Kits](#) | [Protein](#) | [Reagents](#)