

## C. Elegans $\beta$ -tubulin (Mix-mA) Mouse mAb

CatalogNo: YM33050

### Key Features

#### Host Species

- Mouse

#### Reactivity

- C.elegans,Human,Mouse,Rat

#### Applications

- IHC,WB

#### MW

- 55kD (Observed)

### Storage

**Storage\*** -15°C to -25°C/1 year(Do not lower than -25°C)

**Formulation** Liquid in PBS containing 50% glycerol, 0.5% BSA and 0.10% sodium azide.

### Recommended Dilution Ratios

**IHC1:200-400**

**WB 1:5000-20000**

### Basic Information

**Clonality** Monoclonal

**Clone Number** 12F7

### Immunogen Information

**Immunogen** Synthesized peptide derived from C. Elegans  $\beta$ -tubulin

**Specificity** This antibody detects endogenous levels of C. Elegans  $\beta$ -tubulin

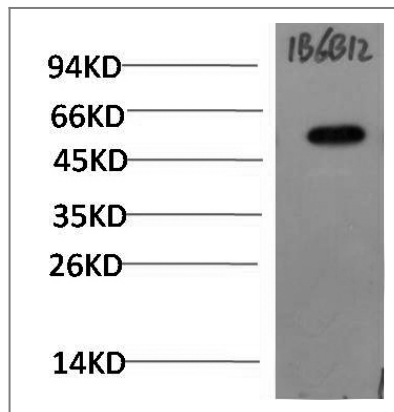
### Target Information

**Gene name** C. Elegans  $\beta$ -tubulin

**Protein Name** C. Elegans  $\beta$ -tubulin

Organism	Gene ID	UniProt ID
Human		

## Validation Data



Western blot analysis of C.Elegans whole body Lysate using Mouse mAb diluted at 1:20,000.

## Contact information

Orders: [order@immunoway.com](mailto:order@immunoway.com)  
Support: [tech@immunoway.com](mailto:tech@immunoway.com)  
Telephone: 877-594-3616 (Toll Free), 408-747-0185  
Website: <http://www.immunoway.com>  
Address: 2200 Ringwood Ave San Jose, CA 95131 USA



Please scan the QR code to access additional product information:  
**C. Elegans  $\beta$ -tubulin (Mix-mA) Mouse mAb**

For Research Use Only. Not for Use in Diagnostic Procedures.

[Antibody](#) | [ELISA Kits](#) | [Protein](#) | [Reagents](#)