

## CD68 (6F3) Mouse mAb

CatalogNo: YM3050 **Orthogonal Validated** 

### Key Features

#### Host Species

- Mouse

#### Reactivity

- Human, Mouse, Rat

#### Applications

- IHC, IF

#### MW

- 37kD (Observed)

#### Isotype

- IgG2b, Kappa

### Storage

**Storage\*** -15°C to -25°C/1 year (Do not lower than -25°C)**Formulation** PBS, pH 7.4, containing 0.5% BSA, 0.02% sodium azide as Preservative and 50% Glycerol.

### Recommended Dilution Ratios

**IHC 1:200-400****IF 1:50-200**

### Basic Information

**Clonality** Monoclonal**Clone Number** 6F3

### Immunogen Information

**Immunogen** Synthetic Peptide of CD68**Specificity** The antibody detects endogenous CD68 proteins.

### Target Information

**Gene name** CD68

**Protein Name** Macrosialin

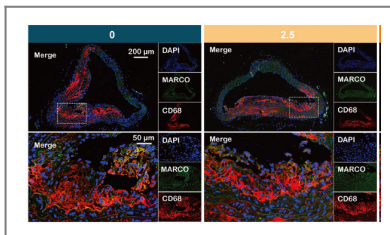
Organism	Gene ID	UniProt ID
Human	<a href="#">968</a> ;	<a href="#">P34810</a> ;
Mouse	<a href="#">12514</a> ;	<a href="#">P31996</a> ;

**Cellular Localization** [Isoform Short]: Cell membrane; Single-pass type I membrane protein.; [Isoform Long]: Endosome membrane; Single-pass type I membrane protein. Lysosome membrane; Single-pass type I membrane protein.

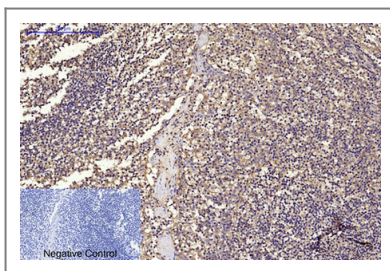
**Tissue specificity** Highly expressed by blood monocytes and tissue macrophages. Also expressed in lymphocytes, fibroblasts and endothelial cells. Expressed in many tumor cell lines which could allow them to attach to selectins on vascular endothelium, facilitating their dissemination to secondary sites.

**Function** Function:Could play a role in phagocytic activities of tissue macrophages, both in intracellular lysosomal metabolism and extracellular cell-cell and cell-pathogen interactions. Bind to tissue- and organ-specific lectins or selectins, allowing homing of macrophage subsets to particular sites. Rapid recirculation of CD68 from endosomes, lysosomes to the plasma membrane may allow macrophages to crawl over selectin bearing substrates or other cells.,PTM:N- and O-glycosylated.,similarity:Belongs to the LAMP family.,tissue specificity:Highly expressed by blood monocytes and tissue macrophages. Also expressed in many tumor cell lines which could allow them to attach to selectins on vascular endothelium, facilitating their dissemination to secondary sites.,

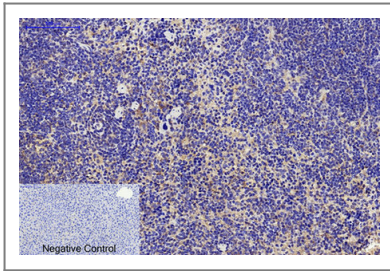
## Validation Data



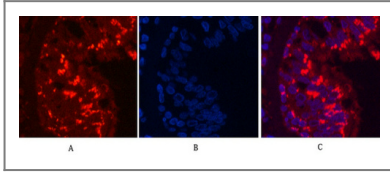
Long-Chain Acyl Carnitines Aggravate Polystyrene Nanoplastics-Induced Atherosclerosis by Upregulating MARCO. Zhenlie Huang IF Mouse aorta



Immunohistochemical analysis of paraffin-embedded Human-Tonsil tissue. 1,CD68 Monoclonal Antibody (6F3) was diluted at 1:200 (4°C overnight). 2, Sodium citrate pH 6.0 was used for antibody retrieval (>98°C,20min). 3,Secondary antibody was diluted at 1:200 (room temperature, 30min). Negative control was used by secondary antibody only.



Immunohistochemical analysis of paraffin-embedded Mouse-liver tissue. 1,CD68 Monoclonal Antibody (6F3) was diluted at 1:200 (4°C overnight). 2, Sodium citrate pH 6.0 was used for antibody retrieval (>98°C,20min). 3,Secondary antibody was diluted at 1:200 (room temperature, 30min). Negative control was used by secondary antibody only.



Immunofluorescence analysis of Human-lung-cancer tissue. 1,CD68 Monoclonal Antibody (6F3) (red) was diluted at 1:200 (4°C overnight). 2, Cy3 labeled Secondary antibody was diluted at 1:300 (room temperature, 50min).3, Picture B: DAPI (blue) 10min. Picture A:Target. Picture B: DAPI. Picture C: merge of A+B

## Contact information

Orders: [order@immunoway.com](mailto:order@immunoway.com)  
Support: [tech@immunoway.com](mailto:tech@immunoway.com)  
Telephone: 877-594-3616 (Toll Free), 408-747-0185  
Website: <http://www.immunoway.com>  
Address: 2200 Ringwood Ave San Jose, CA 95131 USA



Please scan the QR code to access additional product information:  
**CD68 (6F3) Mouse mAb**

For Research Use Only. Not for Use in Diagnostic Procedures.

[Antibody](#) | [ELISA Kits](#) | [Protein](#) | [Reagents](#)