

Ferritin Light Chain Mouse mAb

CatalogNo: YM1422

Key Features

Host Species

- Mouse

Reactivity

- Human

Applications

- ELISA

MW

- 26kD (Observed)

Recommended Dilution Ratios

ELISA 1:10000-20000

Storage

Storage* -15°C to -25°C/1 year(Do not lower than -25°C)

Formulation Liquid in PBS containing 50% glycerol, 0.5% BSA and 0.02% sodium azide.

Basic Information

Clonality Monoclonal

Immunogen Information

Immunogen Purified recombinant full length of human ferritin light chain protein expressed in E.coli.

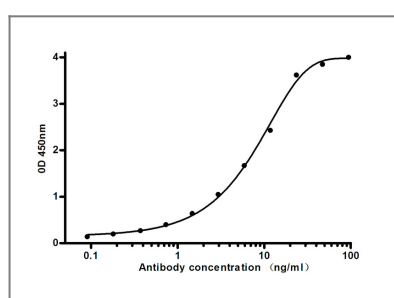
Specificity This antibody detects recombinant ferritin proteins.

Target Information

Gene name ftl

Protein Name	Organism	Gene ID	UniProt ID
	Human	2512;	P02792;
Cellular Localization	cell,cytoplasm,cytosol,intracellular ferritin complex,membrane,autolysosome,extracellular exosome,		
Tissue specificity	Brain,Colon endothelium,Kidney,Liver,Placenta,Skin,Testis,Urinary bladder,		
Function	<p>Disease:Defects in FTL are the cause of hereditary hyperferritinemia-cataract syndrome (HHCS) [MIM:600886]. It is an autosomal dominant disease characterized by early-onset bilateral cataract. Affected patients have elevated level of circulating ferritin. HHCS is caused by mutations in the iron responsive element (IRE) of the FTL gene.,Disease:Defects in FTL are the cause of neuroferritinopathy [MIM:606159]; also known as adult-onset basal ganglia disease. It is a movement disorder with heterogeneous presentations starting in the fourth to sixth decade. It is characterized by a variety of neurological signs including parkinsonism, ataxia, corticospinal signs, mild nonprogressive cognitive deficit and episodic psychosis. It is linked with decreased serum ferritin levels.,Function:Stores iron in a soluble, non-toxic, readily available form. Important for iron homeostasis.,Function:Stores iron in a soluble, non-toxic, readily available form. Important for iron homeostasis. Iron is taken up in the ferrous form and deposited as ferric hydroxides after oxidation. Also plays a role in delivery of iron to cells. Mediates iron uptake in capsule cells of the developing kidney.,online information:Ferritin entry,similarity:Belongs to the ferritin family.,similarity:Contains 1 ferritin-like diiron domain.,subunit:Oligomer of 24 subunits. There are two types of subunits: L (light) chain and H (heavy) chain. The major chain can be light or heavy, depending on the species and tissue type. The functional molecule forms a roughly spherical shell with a diameter of 12 nm and contains a central cavity into which the insoluble mineral iron core is deposited.,</p>		

Validation Data



Indirect ELISA assay for anti-Ferritin Light Chain mouse mAb. Antigen coating concentration: 4ug/ml.

Contact information

Orders: order@immunoway.com
 Support: tech@immunoway.com
 Telephone: 877-594-3616 (Toll Free), 408-747-0185
 Website: <http://www.immunoway.com>
 Address: 2200 Ringwood Ave San Jose, CA 95131 USA



Please scan the QR code
 to access additional
 product information:
**Ferritin Light Chain
 Mouse mAb**

