

## MAP-2 Mouse mAb

CatalogNo: YM1061

### Key Features

#### Host Species

- Mouse

#### Reactivity

- Human, Mouse, Rat, Bovine, Pig

#### Applications

- WB, IF

#### MW

- 200kD (Calculated)

### Recommended Dilution Ratios

**WB 1:1000-1:2000**

**IF 1:100-1:500**

**Not yet tested in other applications.**

### Storage

**Storage\*** -15°C to -25°C/1 year(Do not lower than -25°C)

**Formulation** Liquid in PBS containing 50% glycerol, 0.5% BSA and 0.02% sodium azide.

### Basic Information

**Clonality** Monoclonal

### Immunogen Information

**Immunogen** Purified recombinant human MAP-2 (N-terminus) protein fragments expressed in E.coli.

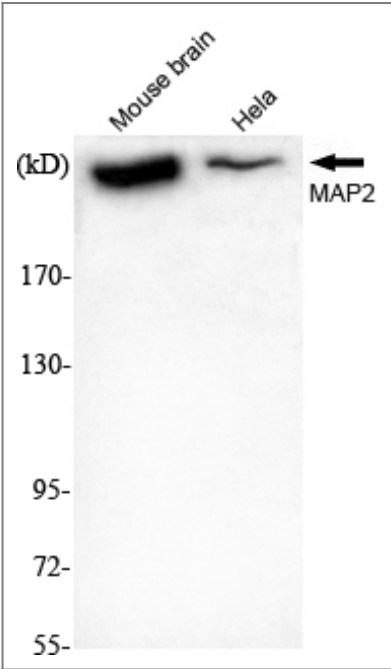
**Specificity** MAP-2 Monoclonal Antibody detects endogenous levels of MAP-2 protein.

### Target Information

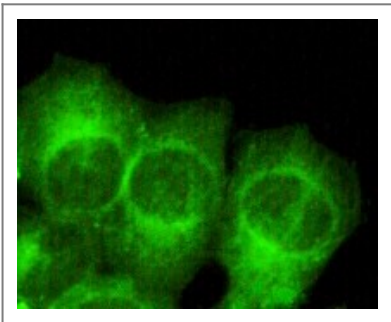
**Gene name** MAP2

<b>Protein Name</b>	Microtubule-associated protein 2		
	<b>Organism</b>	<b>Gene ID</b>	<b>UniProt ID</b>
	Human	<a href="#">4133;</a>	<a href="#">P11137;</a>
	Mouse		<a href="#">P20357;</a>
	Rat		<a href="#">P15146;</a>
<b>Cellular Localization</b>	Cytoplasm, cytoskeleton . Cell projection, dendrite .		
<b>Tissue specificity</b>	Brain,Brain cortex,Epithelium,Pancreas,Testis,		
<b>Function</b>	Alternative products:Additional isoforms seem to exist,Function:The exact function of MAP2 is unknown but MAPs may stabilize the microtubules against depolymerization. They also seem to have a stiffening effect on microtubules.,PTM:MAP2A/c is phosphorylated. Phosphorylated upon DNA damage, probably by ATM or ATR.,similarity:Contains 3 Tau/MAP repeats.,similarity:Contains 4 Tau/MAP repeats.,		

| Validation Data



Western Blot analysis using MAP-2 Monoclonal Antibody against mouse brain, HeLa cell lysate.



Immunofluorescence analysis of HeLa cells using MAP-2 Monoclonal Antibody.

## | Contact information

Orders: order@immunoway.com  
Support: tech@immunoway.com  
Telephone: 877-594-3616 (Toll Free), 408-747-0185  
Website: <http://www.immunoway.com>  
Address: 2200 Ringwood Ave San Jose, CA 95131 USA



Please scan the QR code  
to access additional  
product information:  
**MAP-2 Mouse mAb**

---

For Research Use Only. Not for Use in Diagnostic Procedures.

[Antibody](#) | [ELISA Kits](#) | [Protein](#) | [Reagents](#)