

Cleaved SUMO-2/3 (Gly93) Rabbit pAb

CatalogNo: YC0075

Orthogonal Validated Comparable Abs 

Key Features

Host Species

- Rabbit

Reactivity

- Human, Mouse, Rat

Applications

- WB, ELISA, CoIP

MW

- 11kD (Observed)

Isotype

- IgG

Recommended Dilution Ratios

WB 1:500-1:2000**ELISA 1:20000****IP 1:50-100****Not yet tested in other applications.**

Storage

Storage* -15°C to -25°C/1 year (Do not lower than -25°C)**Formulation** Liquid in PBS containing 50% glycerol, 0.5% BSA and 0.02% sodium azide.

Basic Information

Clonality Polyclonal

Immunogen Information

Immunogen The antiserum was produced against synthesized peptide derived from human SUMO2/3. AA range: 44-93**Specificity** Cleaved-SUMO-2/3 (G93) Polyclonal Antibody detects endogenous levels of fragment of activated SUMO-2/3 protein resulting from cleavage adjacent to G93.

| Target Information

Gene name SUMO2 SUMO3

Protein Name Small ubiquitin-related modifier 2

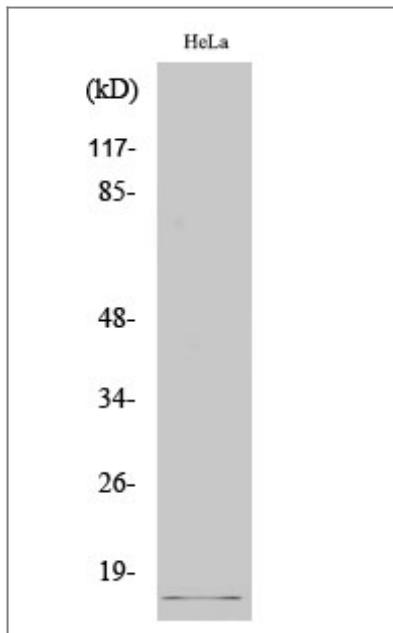
Organism	Gene ID	UniProt ID
Human	6613 ;	P61956 ; P55854 ;
Mouse	170930 ;	P61957 ;
Rat	690244 ;	P61959 ;

Cellular Localization Nucleus. Nucleus, PML body.

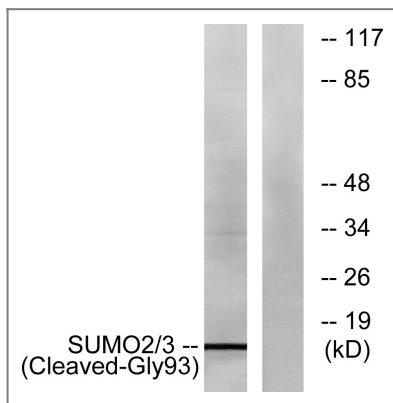
Tissue specificity Broadly expressed.

Function Function:Ubiquitin-like protein which can be covalently attached to target lysines either as a monomer or as a lysine-linked polymer. Does not seem to be involved in protein degradation and may function as an antagonist of ubiquitin in the degradation process. Plays a role in a number of cellular processes such as nuclear transport, DNA replication and repair, mitosis and signal transduction. Covalent attachment to its substrates requires prior activation by the E1 complex SAE1-SAE2 and linkage to the E2 enzyme UBE2I, and can be promoted by an E3 ligase such as PIAS1-4, RANBP2 or CBX4.,online information:SUMO protein entry,PTM:Cleavage of precursor form by SENP1 or SENP2 is necessary for function.,PTM:Cleavage of precursor form by SENP1, SENP2 or SENP5 is necessary for function.,PTM:Polymeric chains can be formed through Lys-11 cross-linking.,similarity:Belongs to the ubiquitin family. SUMO subfamily.,similarity:Contains 1 ubiquitin-like domain.,subcellular location:Nuclear bodies.,subunit:Homotrimer (Potential). Crystal packing analysis suggests a possible trimeric assembly, of which the biological significance remains to be determined. Interacts with SAE2 and UBE2I. Covalently attached to a number of proteins. Interacts with PELP1.,subunit:Interacts with SAE2 and UBE2I. Covalently attached to a number of proteins.,tissue specificity:Broadly expressed.,tissue specificity:Expressed predominantly in liver.,

| Validation Data



Western Blot analysis of various cells using Cleaved-SUMO-2/3 (G93) Polyclonal Antibody



Western blot analysis of lysates from HeLa cells, using SUMO2/3 (Cleaved-Gly93) Antibody. The lane on the right is blocked with the synthesized peptide.

Contact information

Orders: order@immunoway.com
 Support: tech@immunoway.com
 Telephone: 877-594-3616 (Toll Free), 408-747-0185
 Website: <http://www.immunoway.com>
 Address: 2200 Ringwood Ave San Jose, CA 95131 USA



Please scan the QR code to access additional product information:

Cleaved SUMO-2/3 (Gly93) Rabbit pAb

For Research Use Only. Not for Use in Diagnostic Procedures.

[Antibody](#) | [ELISA Kits](#) | [Protein](#) | [Reagents](#)