

# Pathology Grade Antibodies



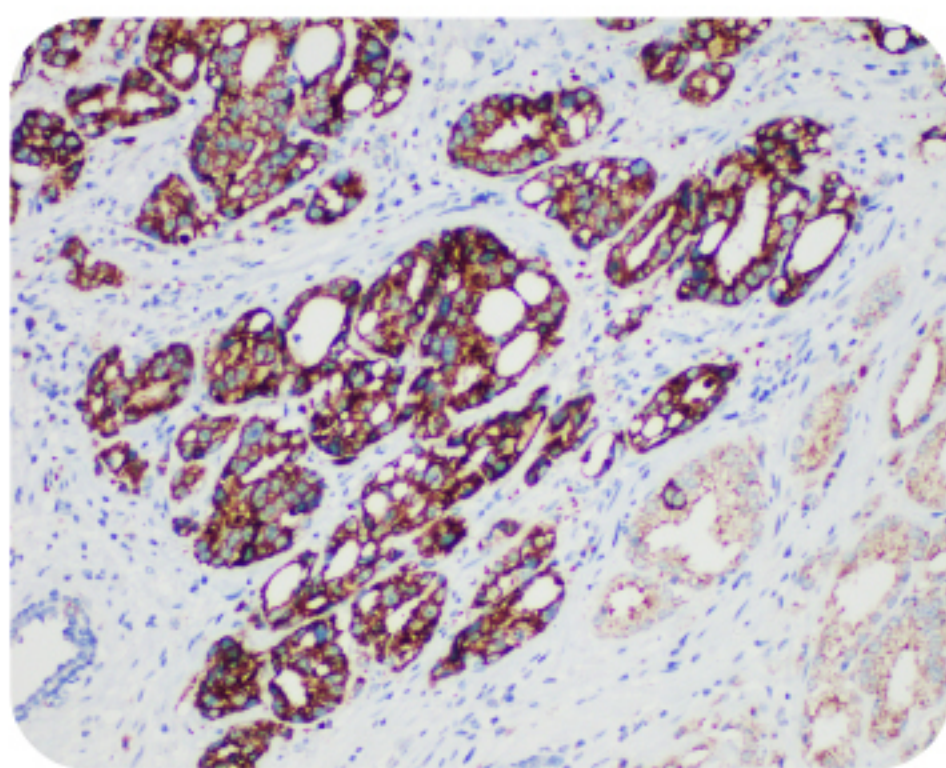
## Pathology grade antibodies & Polymer secondary antibodies - the exclusive antibodies for IHC

High specificity, high sensitivity, low background  
High quality, comparable to top global brands  
High accuracy, clarity and visibility in test results

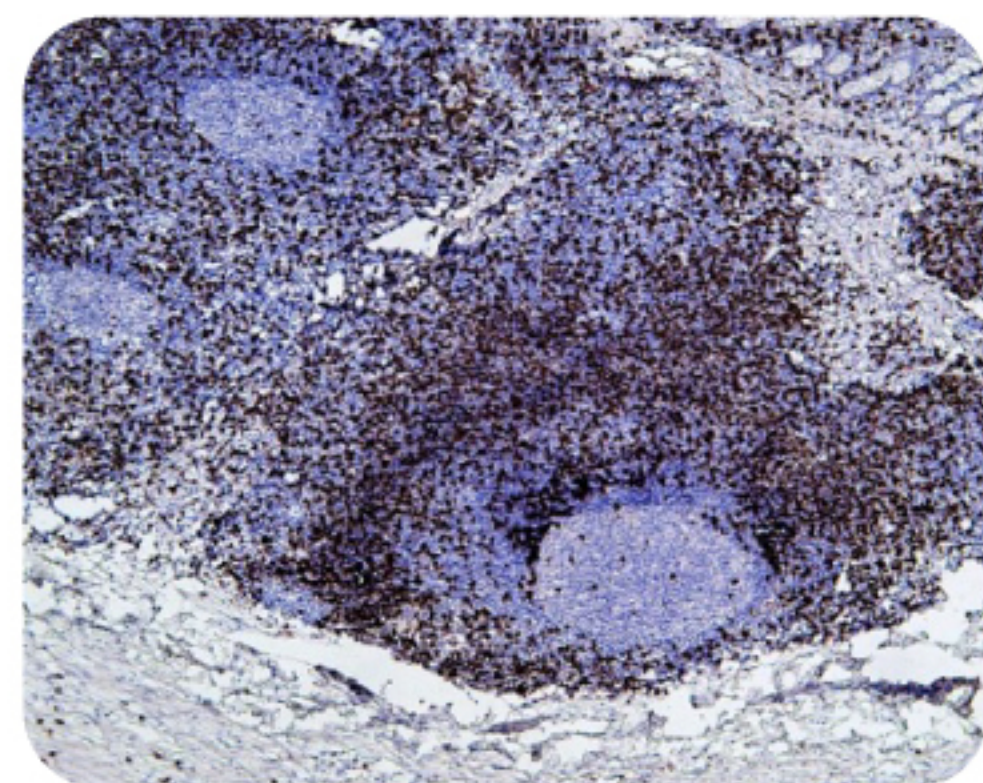
## Polymer secondary antibodies

- Compatible with both mouse and rabbit
- Non-biotin labeled, no endogenous interference
- Ready-to-use, simple and quick
- Just incubate for 30 minutes to complete the test precisely and efficiently

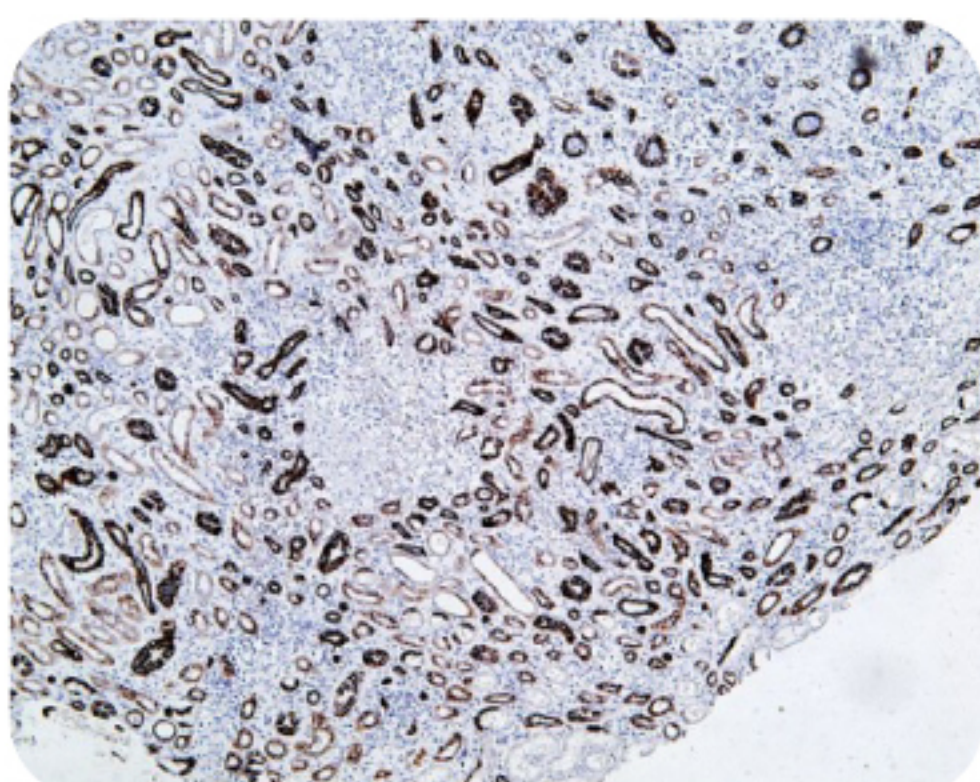
## Data demonstration:



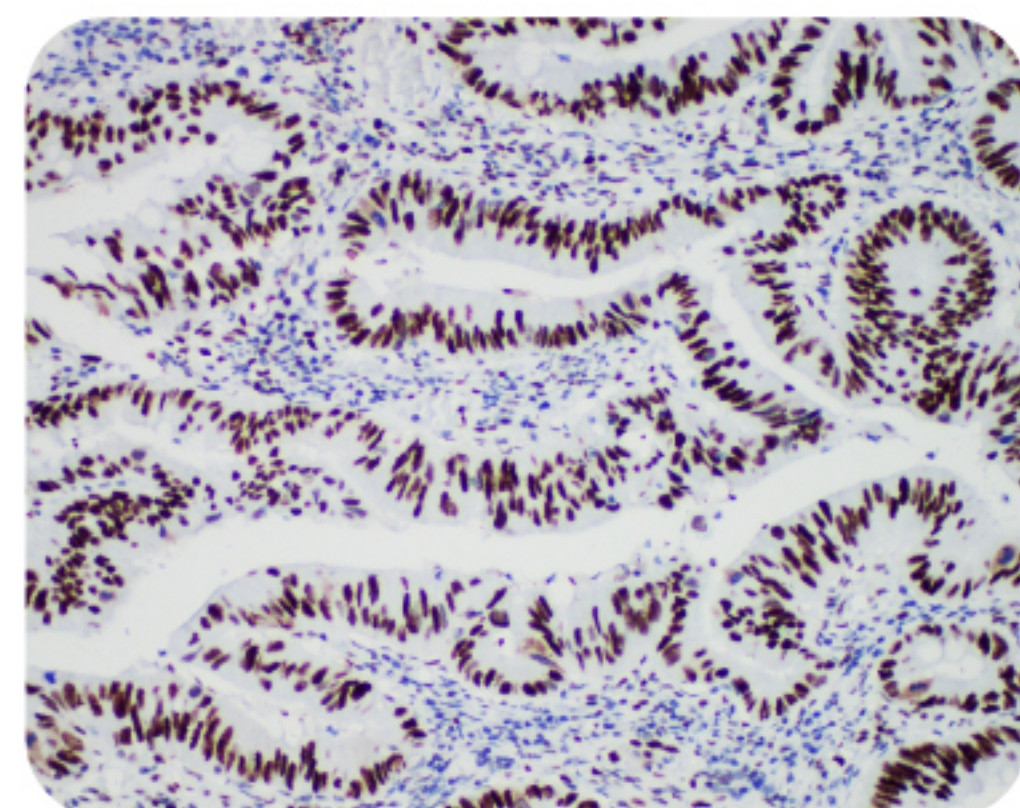
AMACR in human Prostate Adenocarcinoma with Polymer HRP Goat Anti Mouse/ Rabbit IgG(H+L)-P



CD8 in human Appendix with Polymer HRP Goat Anti Mouse/ Rabbit IgG(H+L)-S



CK7 in human kidney with Polymer HRP Goat Anti Mouse/ Rabbit IgG(H+L)-S



MSH6 in human Colorectal Cancer with Polymer HRP Goat Anti Mouse/ Rabbit IgG(H+L)-P

