

Human MIF ELISA Kit

Catalog #: KE1237

**Detection and Quantification of Human
MIF Concentrations in Cell Lysates, Sera and Plasma.**

**Please read the provided manual as suggested
experimental protocols may have changed.**

**Research Purposes Only. Not Intended for Diagnostic
or Clinical Procedures.**

CONTENTS

PAGE

| | |
|---------------------------------------|----|
| Introduction..... | 3 |
| Assay Principles..... | 4 |
| Assay Format..... | 5 |
| Assay Restrictions..... | 6 |
| Materials Included..... | 6 |
| Additional Materials Required..... | 7 |
| Health and Safety Precautions..... | 7 |
| Storage Information..... | 8 |
| Sample Preparation and Storage..... | 9 |
| Sample Experiment Layout..... | 10 |
| Immunoassay Protocol..... | 11 |
| Summarized Protocol..... | 16 |
| Sensitivity..... | 17 |
| Cross Reactivity and Specificity..... | 17 |
| Technical Support..... | 18 |
| ELISA Plate Template..... | 19 |
| Notes..... | 20 |

INTRODUCTION

MIF is a pro-inflammatory cytokine and is involved in the innate immune response to bacterial pathogens. The expression of MIF at sites of inflammation suggests a role as mediator in regulating the function of macrophages in host defense. MIF counteracts the anti-inflammatory activity of glucocorticoids. It also has phenylpyruvate tautomerase and dopachrome tautomerase activity (in vitro), but the physiological substrate is not known. It is not clear whether the tautomerase activity has any physiological relevance, and whether it is important for cytokine activity. MIF does not have a cleavable signal sequence and is secreted via a specialized, non-classical pathway. It is secreted by macrophages upon stimulation by bacterial lipopolysaccharide (LPS), or by *M. tuberculosis* antigens. MIF is up-regulated in concanavalin-A-treated lymphocytes and in macrophages upon exposure to *M. tuberculosis* antigens. Genetic variations in MIF are associated with susceptibility to rheumatoid arthritis systemic juvenile (RASJ), an inflammatory articular disorder with systemic-onset beginning before the age of 16. It represents a subgroup of juvenile arthritis associated with severe extra-articular features and occasionally fatal complications. During active phases of the disorder, patients display a typical daily spiking fever, an evanescent macular rash, lymphadenopathy, hepatosplenomegaly, serositis, myalgia and arthritis. Serum levels of MIF are elevated in patients with severe sepsis or septic shock. High levels of MIF are correlated with low survival. Drugs that inhibit tautomerase activity protect against death due to sepsis.

Source: Entrez Gene; Swiss-Prot

ASSAY PRINCIPLES

The Human MIF ELISA Kit contains the components necessary for quantitative determination of natural or recombinant Human MIF concentrations within any experimental sample including cell lysates, serum and plasma. This particular immunoassay utilizes the quantitative technique of a “Sandwich” Enzyme-Linked Immunosorbent Assay (ELISA) where the target protein (antigen) is bound in a “sandwich” format by the primary capture antibodies coated to each well-bottom and the secondary detection antibodies added subsequently by the investigator. The capture antibodies coated to the bottom of each well are specific for a particular epitope on Human MIF while the user-added detection antibodies bind to epitopes on the captured target protein. Amid each step of the procedure, a series of wash steps must be performed to ensure the elimination of non-specific binding between proteins to other proteins or to the solid phase. After incubation and “sandwiching” of the target antigen, a peroxidase enzyme is conjugated to the constant heavy chain of the secondary antibody (either covalently or via Avidin/Streptavidin-Biotin interactions), allowing for a colorimetric reaction to ensue upon substrate addition. When the substrate TMB (3, 3', 5, 5'-Tetramethylbenzidine) is added, the reaction catalyzed by peroxidase yields a blue color that is representative of the antigen concentration. Upon sufficient color development, the reaction can be terminated through addition of Stop Solution (2 N Sulfuric Acid) where the color of the solution will turn yellow. The absorbance of each well can then be read by a spectrophotometer, allowing for generation of a standard curve and subsequent determination of protein concentration.

ASSAY FORMAT


Capture Antibody



Capture antibodies specific for the target are coated to the plate. Additional binding sites on the plate are blocked.


Target Antigen



Target antigen present in standard or sample is bound by capture antibodies on the solid-phase.


Biotinylated Detection Antibody



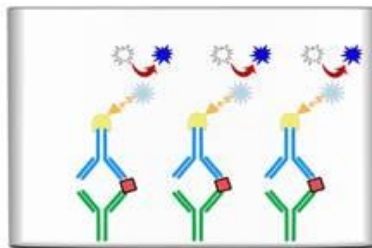
Biotinylated detection antibodies specific for the target are added to bind another epitope on the target antigen.


Streptavidin-HRP



Streptavidin-HRP attaches to detection antibody via high affinity streptavidin-biotin interaction.


Unreacted TMB



TMB substrate is converted to the blue TMB diimine via the HRP enzyme. Upon addition of acid, the reaction terminates and the wells can be read at 450 nm.


Blue TMB Diimine Product

ASSAY RESTRICTIONS

- This ELISA kit is intended for research purposes only, NOT diagnostic or clinical procedures of any kind.
- Materials included in this kit should NOT be used past the expiration date on the kit label.
- Reagents or substrates included in this kit should NOT be mixed or substituted with reagents or substrates from any other kits.
- Variations in pipetting technique, washing technique, operator laboratory technique, kit age, incubation time or temperature may cause differences in binding affinity of the materials provided.
- The assay is designed to eliminate interference and background by other cellular macromolecules or factors present within any biological samples. However, the possibility of background noise cannot be fully excluded until all factors have been tested using the assay kit.

MATERIALS INCLUDED

| Component | Quantity Per Plate | Container |
|--|-------------------------|-----------|
| Microstrips Coated w/ Capture Antibody | 12 x 8-Well Microstrips | - |
| Protein Standard | Lyophilized (1.67 ng) | Red |
| Biotinylated Detection Antibody | Lyophilized | Yellow |
| 400x Streptavidin-HRP | 30 μ l | Blue |
| Wash Buffer (10x) | 50 ml | Clear |
| Assay Diluent | 50 ml | Clear |
| Ready-to-Use Substrate | 12 ml | Brown |
| Stop Solution | 12 ml | Clear |
| Adhesive Plate Sealers | 2 sheets | - |
| Technical Manual | 1 Manual | - |

ADDITIONAL MATERIALS REQUIRED

The following materials and/or equipment are NOT provided in this kit but are necessary to successfully conduct the experiment:

- Microplate reader able to measure absorbance at 450 nm (with correction wavelength set to 540 nm or 570 nm)
- Micropipettes with capability of measuring volumes ranging from 1 μ l to 1 ml
- Deionized or sterile water
- Squirt bottle, manifold dispenser, multichannel pipette reservoir or automated microplate washer
- Graph paper or computer software capable of generating or displaying logarithmic functions
- Absorbent paper or vacuum aspirator
- Test tubes or microfuge tubes capable of storing ≥ 1 ml
- Bench-top centrifuge (optional)
- Bench-top vortex (optional)
- Orbital shaker (optional)

HEALTH AND SAFETY PRECAUTIONS

- Reagents provided in this kit may be harmful if ingested, inhaled or absorbed through the skin. Please carefully review the MSDS for each reagent before conducting the experiment.
- Stop Solution contains 2 N Sulfuric Acid (H_2SO_4) and is an extremely corrosive agent. Please wear proper eye, hand and face protection when handling this material. When the experiment is finished, be sure to rinse the plate with copious amounts of running water to dilute the Stop Solution prior to disposing the plate.

STORAGE INFORMATION

Note: If used frequently, reagents may be stored at 4°C.

Unopened Kits: Store at 4°C for 6 months.

| Component | Storage Time | Storage Information |
|---|---|---------------------|
| Microstrips Coated w/ Capture Antibody | 6 Months | 4°C |
| 400x Streptavidin-HRP | | |
| Wash Buffer (10x) | | |
| Assay Diluent | | |
| Ready-to-Use Substrate | | |
| Stop Solution | | |
| Protein Standard | Lyophilized: 6 Months Reconstituted: 1 Month | 4°C |
| Biotinylated Detection Antibody | | |
| Adhesive Plate Sealers | - | - |
| Technical Manual | - | - |

SAMPLE PREPARATION AND STORAGE

If samples are to be used within 24 hours, aliquot and store at 4°C. If samples are to be used over a long period of time, aliquot and store between -20°C and -80°C, depending on the duration of storage.

Note: Samples containing a visible precipitate or pellet must be clarified prior to use in the assay.

Caution: Avoid repeated freeze/thaw cycles to prevent loss of biological activity of proteins in experimental samples.

Cell Lysate and Supernatants

Remove large cell components via centrifugation and perform the assay. Cell lysates and supernatants require a dilution using Assay Diluent. A serial dilution may be performed to determine a suitable dilution factor for the sample. For future use of the sample, follow the sample storage guidelines stated above.

Serum

Allow samples to clot in a serum separator tube (SST) for 30 minutes. After sufficient clotting, centrifuge at 1000 x g for 15 minutes and remove serum from SST in preparation for the assay. Serum samples require at least a 1:50 dilution using Assay Diluent. For future use of the sample, follow the storage guidelines above.

Plasma

Use heparin, citrate or EDTA as an anticoagulant to gather plasma from original biological sample. After collection of the plasma, centrifuge for 15 minutes at 1000 x g. This step must be performed within 30 minutes of plasma collection. Plasma samples require at least a 1:50 dilution using Assay Diluent. Afterwards, perform the assay or for future use of the sample, follow the storage guidelines stated above.

SAMPLE EXPERIMENT LAYOUT

| | 1 | 2 | 3 | 4 | 5 | 6 |
|----------|--------------------------|--------------------------|--------------------------|----------|----------|----------|
| A | Standard (High Point) | Standard (High Point) | Standard (High Point) | Sample | Sample | Sample |
| B | Standard (1:2) | Standard (1:2) | Standard (1:2) | Sample | Sample | Sample |
| C | Standard (1:4) | Standard (1:4) | Standard (1:4) | Sample | Sample | Sample |
| D | Standard (1:8) | Standard (1:8) | Standard (1:8) | Sample | Sample | Sample |
| E | Standard (1:16) | Standard (1:16) | Standard (1:16) | Sample | Sample | Sample |
| F | Standard (1:32) | Standard (1:32) | Standard (1:32) | Sample | Sample | Sample |
| G | Standard (1:64) | Standard (1:64) | Standard (1:64) | Sample | Sample | Sample |
| H | Negative Control | Negative Control | Negative Control | Sample | Sample | Sample |

IMMUNOASSAY PROTOCOL

Note: If possible, all incubation steps should be performed on an orbital shaker to equilibrate solutions when added to the microplate wells. Also, all provided solutions should be at ambient temperature prior to use.

Note: Avoid adding solutions into wells at an angle, always keep pipette tip perpendicular to plate bottom.

Reconstitution of Provided Materials

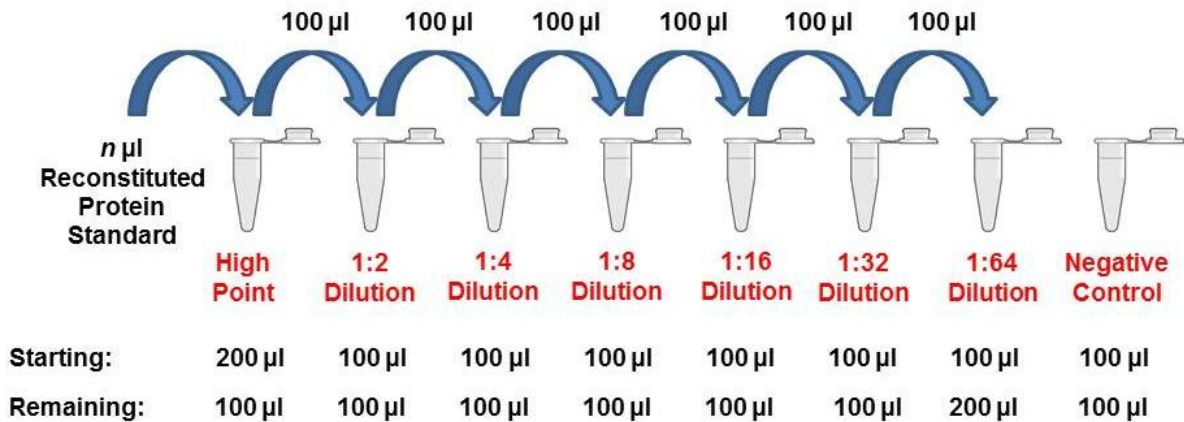
1. Reconstitute the Biotin-Conjugated Detection Antibody in 55 μ l of ddH₂O for a concentration of 18 μ g/ml.
2. Reconstitute the Protein Standard in 55 μ l of ddH₂O for a concentration of 30 ng/ml.
3. Dilute the 50 ml of 10x Wash Buffer in 450 ml of ddH₂O for 500 ml of 1x Wash Buffer.

Addition of Known Standard and Unknown Sample to Immunoassay

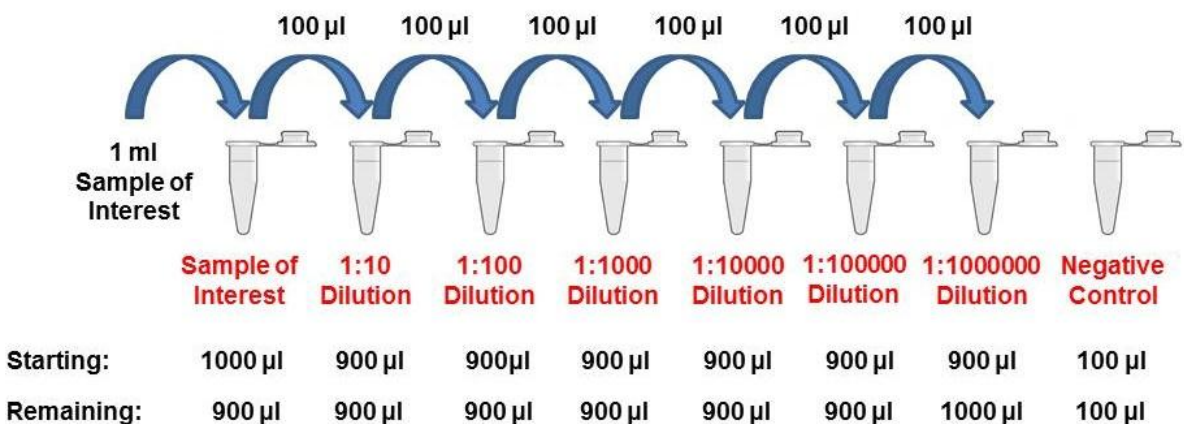
The Human MIF ELISA Kit allows for the detection and quantification of endogenous levels of natural and/or recombinant Human MIF proteins within the range of 31-2000pg/ml.

1. Dilute the known standard sample from 2000pg/ml to 0pg/ml in a series of microfuge tubes. Mix each tube thoroughly by inverting several times or by vortexing lightly to ensure proper equilibration. Add 100 μ l of each serial dilution step into the wells of a specified row or column of the 96-well microtiter plate in duplicate or triplicate and incubate at room temperature for 2 hours. Unknown samples of interest can be serially diluted with Assay Diluent to concentrations within the detection range of this assay kit and added to the plate at 100 μ l per well. Seal the microplate air-tight using one of the microplate adhesive seals provided in this kit or Parafilm if readily available. See Appendix for serial dilution diagram.

To obtain serial dilution high point, dilute reconstituted Protein Standard to the maximum concentration for serial dilution by adding $n\mu\text{l}$ reconstituted Protein Standard to serial dilution high point tube and then raising the volume to $200\mu\text{l}$. Shown below is a diagram illustrating a hypothetical 2-fold serial dilution on a given reconstituted Protein Standard.



For samples of unknown protein concentrations, serial dilute the experimental sample using Assay Diluent to determine range of detection and acceptable dilutions. Shown below is a diagram illustrating a 10-fold serial dilution on a given Sample of Interest.



Addition of Detection Antibody to Capture Antibody-Bound Samples

1. Aspirate the protein standard solution out of the microplate wells. If your lab does not have a vacuum-based aspirator, you may dump the solutions from the microplate into a waste container and blot 3-4 times on a stack of paper towels until most or all of the liquid is removed from the wells. Dilute the 10xWash Buffer to 1x using pure H₂O. Add 300-400 µl of 1x Wash Buffer to each well being used and gently shake for 5-7 minutes on an orbital shaker. Perform this wash step 4 times consecutively.
2. After the 4th wash step, dilute the detection antibody solution 1:18/0 in Assay Diluent to a concentration of 0.1 µg/ml. Mix the test tube either by inverting several times or vortexing to ensure proper equilibration. Ensure that there is enough detection antibody solution for all wells being used. Add 100 µl of the diluted detection antibody solution into each well, seal the plate and incubate at room temperature for 2 hours.

Conjugation of Streptavidin-HRP to Biotinylated Detection Antibody

1. Remove the detection antibody solution out of the microplate wells by either vacuum-based aspirator or paper towel blotting. Perform 4 consecutive wash steps with gentle shaking between each wash.
2. Dilute the 400x Streptavidin-HRP by 1:400 using Assay Diluent to a 1x Streptavidin-HRP solution.
3. After the 4th wash step, add 100 µl of 1xStreptavidin-HRP solution into each well and incubate at room temperature for 30 minutes.

Application of Liquid Substrate for Colorimetric Reaction

1. Remove the 1xStreptavidin-HRP solution out of the microplate wells by either vacuum-based aspirator or paper towel blotting. Prepare the Ready-to-Use Substrate by bringing it to room temperature without exposure to fluorescent or UV light as these may degrade the substrate. Perform 4 consecutive wash steps with gentle shaking between each wash.

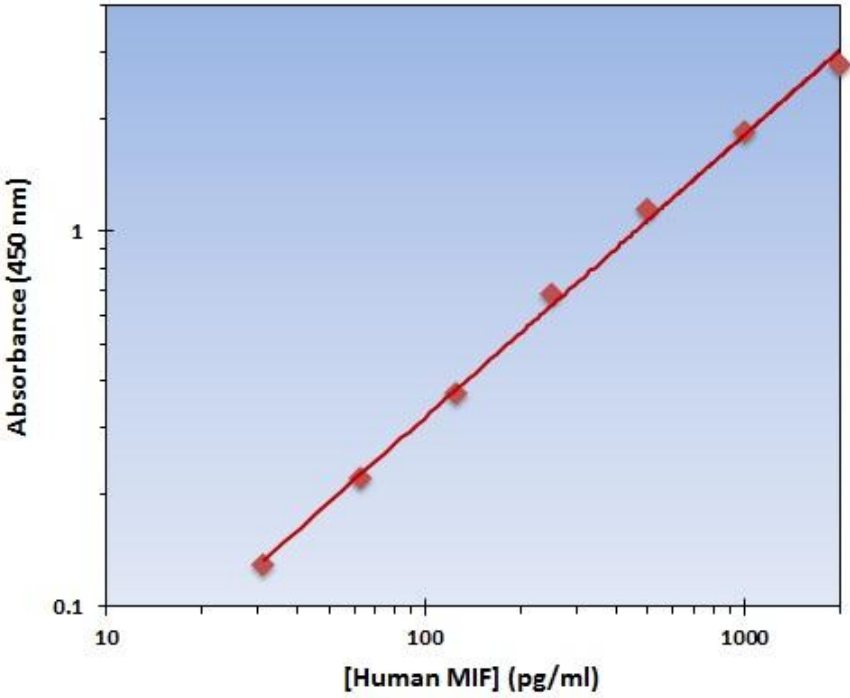
2. After the 4th wash step, add 100 µl of Ready-to-Use Substrate solution into each well and incubate at room temperature for color development. The microplate should be kept out of direct light by either covering with an opaque object or putting it into a dark room. Closely monitor the color development as some wells may turn blue very quickly depending on analyte and/or detection antibody-HRP concentrations. Once the blue color has ceased to develop further, immediately add 100 µl of Stop Solution to each well being used. The color in the wells should immediately change from blue to yellow.
3. The microplate is now ready to be read by a microplate reader. Within 30 minutes of adding the Stop Solution, determine the optical density (absorbance) of each well by reading the plate with the microplate reader set to 450 nm. If wavelength correction is available, set to 540 nm or 570 nm. If wavelength correction is not available, subtract readings at 540 nm or 570 nm from the readings at 450 nm. **Caution:** Readings made directly at 450 nm without correction may be higher and less accurate.

Generation of Standard Curve and Interpretation of Data

1. Average the duplicate or triplicate readings for each standard, control and sample and subtract the average zero standard optical density.
2. Generate a standard curve by using Microsoft Excel or other computer software capable of establishing a 4-Parameter Logistic (4-PL) curve fit. If using Excel or an alternative graphing tool, plot the average optical density values in absorbance units (y-axis) against the known standard concentrations in pg/ml (x-axis). **Note:** Only use the values in which a noticeable gradient can be established. Afterwards, generate a best fit curve or “trend-line” through the plotted points via regression analysis. **Note:** Shown on the next page is an example of typical data produced by analysis of the standard sample.

The data and subsequent graph was obtained after performing a cytokine ELISA for Human MIF. Each known sample concentration was assayed in triplicate.

| Human MIF Standard Curve | |
|-----------------------------|---------------------|
| Concentration (pg/ml) | Average OD 450nm |
| 2000 | 2.8 |
| 1000 | 1.85 |
| 500 | 1.15 |
| 250 | 0.68 |
| 125 | 0.37 |
| 62.5 | 0.22 |
| 31.25 | 0.13 |



SUMMARIZED PROTOCOL

Reconstitute Biotinylated Detection Antibody and Protein Standard and dilute the 10x Wash Buffer as specified.



Perform serial dilution of Protein Standard and prepare samples as desired. See sample preparation section for instructions to dilute serum and plasma samples.



Add 100 μ l of Protein Standard, sample or control to each well and incubate for 2 hours at room temperature.



Aspirate Protein Standards, samples or controls out and wash plate 4 times.



Dilute Biotinylated Detection Antibody as specified. Add 100 μ l to each well and incubate for 2 hours at room temperature.



Aspirate Biotinylated Detection Antibody out and wash plate 4 times.



Dilute 400x Streptavidin-HRP as specified. Add 100 μ l of 1x Streptavidin-HRP to each well and incubate at room temperature for 30 minutes.



Aspirate 1x Streptavidin-HRP out and wash plate 4 times.



Add 100 μ l of Ready-to-Use Substrate to each well and incubate at room temperature for color development.



Add 100 μ l of Stop Solution and read plate at 450 nm.

SENSITIVITY

The Human MIF ELISA Kit allows for the detection and quantification of endogenous levels of natural and/or recombinant Human MIF proteins within the range of 32-2000 pg/ml.

CROSS REACTIVITY AND SPECIFICITY

The Human MIF ELISA is capable of recognizing both recombinant and naturally produced Human MIF proteins. The antigens listed below were tested at 50 ng/ml and did not exhibit significant cross reactivity or interference.

- Human: IFN- γ , IL-4
- Murine: MIF

TECHNICAL SUPPORT

For troubleshooting, information or assistance, please go online to www.immunoway.com.

ELISA PLATE TEMPLATE

| | A | B | C | D | E | F | G | H |
|----|---|---|---|---|---|---|---|---|
| 1 | | | | | | | | |
| 2 | | | | | | | | |
| 3 | | | | | | | | |
| 4 | | | | | | | | |
| 5 | | | | | | | | |
| 6 | | | | | | | | |
| 7 | | | | | | | | |
| 8 | | | | | | | | |
| 9 | | | | | | | | |
| 10 | | | | | | | | |
| 11 | | | | | | | | |
| 12 | | | | | | | | |

NOTES



**Over 2,000 Assay Kits including Sandwich, Cell-Based and
Transcription Factor ELISA Kits**

Visit us at www.immunoway.com