

## GSDME N-terminal Rabbit pAb

CatalogNo: YT7990

Orthogonal Validated 

### Key Features

**Host Species**

- Rabbit

**Reactivity**

- Human, Mouse, Rat

**Applications**

- IF, WB, IHC

**MW**

- 36kD, 55kD (Observed)

**Isotype**

- IgG

### Recommended Dilution Ratios

**IF 1:50-200****WB 1:5000-20000****IHC 1:200-300**

### Storage

**Storage\***

-15°C to -25°C/1 year (Do not lower than -25°C)

**Formulation**

Liquid in PBS containing 50% glycerol, and 0.02% sodium azide.

### Basic Information

**Clonality**

Polyclonal

### Immunogen Information

**Immunogen**

Synthesized peptide derived from human GSDME. AA range: 1-100

**Specificity**

The antibody detects endogenous full length and n-terminal fragment of gsdme protein,

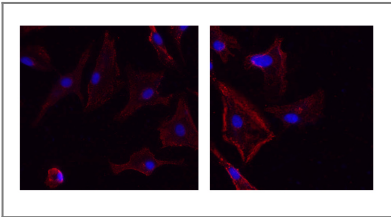
### Target Information

**Gene name**

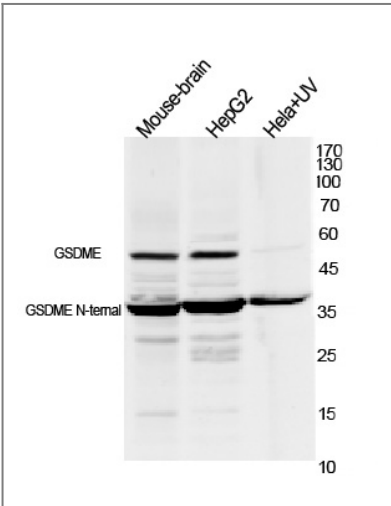
GSDME

<b>Protein Name</b>	Gasdermin-E,DFNA5,Dfna5h,EG14210,2310037D07Rik .4932441K13Rik ,ICERE 1,ICERE-1,Deafness, autosomal dominant 5,Non-syndromic hearing impairment protein 5,GSDME-NT		
	<b>Organism</b>	<b>Gene ID</b>	<b>UniProt ID</b>
	Human	<a href="#">1687;</a>	<a href="#">O60443;</a>
<b>Cellular Localization</b>	[Gasdermin-E, N-terminal]: Cell membrane ; Multi-pass membrane protein .; [Gasdermin-E]: Cytoplasm, cytosol .		
<b>Tissue specificity</b>	Expressed in cochlea (PubMed:9771715). Low level of expression in heart, brain, placenta, lung, liver, skeletal muscle, kidney and pancreas, with highest expression in placenta (PubMed:9771715).		
<b>Function</b>	Cleavage at Asp-270 by CASP3 (mature and uncleaved precursor forms) or granzyme B (GZMB) relieves autoinhibition and is sufficient to initiate pyroptosis.		

Validation Data



Immunofluorescence analysis of un-treated (left) A549 and UV treated(right) A549 cell. 1,primary Antibody was diluted at 1:200(4°C overnight). 2, Goat Anti Rabbit IgG (H&L) - Alexa Fluor 594 Secondary antibody was diluted at 1:1000(room temperature, 50min).3, Picture B: DAPI(blue) 10min.



Western blot analysis of lysates from 1)mouse-brain, 2)Hela cells treated by UV 15min,3) HepG2 cells, primary antibody was diluted at 1:1000, 4°over night, secondary antibody HRP goat anti rabbit (Immunoway:RS0002) was diluted at 1:10000

Contact information

Orders: [order@immunoway.com](mailto:order@immunoway.com)  
Support: [tech@immunoway.com](mailto:tech@immunoway.com)  
Telephone: 877-594-3616 (Toll Free), 408-747-0185  
Website: <http://www.immunoway.com>  
Address: 2200 Ringwood Ave San Jose, CA 95131 USA



Please scan the QR code  
to access additional  
product information:  
**GSDME N-terminal  
Rabbit pAb**

---

For Research Use Only. Not for Use in Diagnostic Procedures.

[Antibody](#) | [ELISA Kits](#) | [Protein](#) | [Reagents](#)