

PEX5R Rabbit pAb

CatalogNo: YT7634

Key Features

Host Species

- Rabbit

Reactivity

- Human, Mouse, Rat

Applications

- WB, IHC

MW

- 69kD (Calculated)

Isotype

- IgG

Storage

Storage* -15°C to -25°C/1 year (Do not lower than -25°C)

Formulation Liquid in PBS containing 50% glycerol, 0.5% BSA and 0.02% sodium azide.

Recommended Dilution Ratios

WB 1:500-2000

IHC 1:50-300

Basic Information

Clonality Polyclonal

Immunogen Information

Immunogen Synthesized peptide derived from human PEX5R AA range: 267-317

Specificity This antibody detects endogenous levels of PEX5R at Human/Mouse/Rat

Target Information

Gene name PEX5L PEX5R PXR2

Protein Name PEX5R

Organism	Gene ID	UniProt ID
Human	51555 ;	Q8IYB4 ;
Mouse	58869 ;	Q8C437 ;
Rat	286937 ;	Q925N3 ;

Cellular Localization

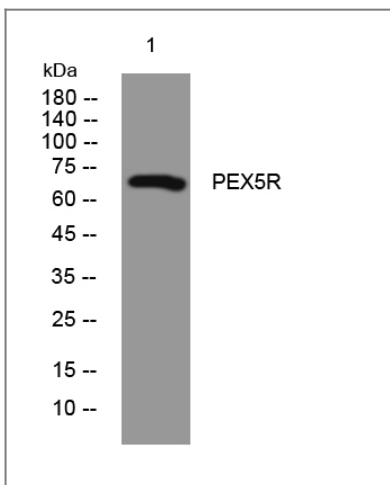
Cytoplasm . Membrane ; Peripheral membrane protein . Some fraction is membrane associated via its interaction with RAB8B. .

Tissue specificity Mainly expressed in brain. Also expressed in pancreas, testis and pituitary.

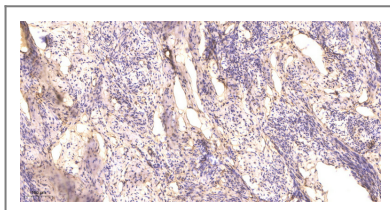
Function

similarity:Belongs to the peroxisomal targeting signal receptor family.,similarity:Contains 5 TPR repeats.,subcellular location:Some fraction is membrane associated via its interaction with RAB8B.,subunit:Interacts with RAB8B (By similarity). May interact with the C-terminal PTS1-type tripeptide peroxisomal targeting signal (SKL-type); the relevance of such interaction is however unclear.,tissue specificity:Mainly expressed in brain. Also expressed in pancreas, testis and pituitary.,

Validation Data



Western blot analysis of lysates from HeLa cells, primary antibody was diluted at 1:1000, 4° over night



Immunohistochemical analysis of paraffin-embedded human cervical carcinoma. 1, Antibody was diluted at 1:200(4° overnight). 2, Tris-EDTA,pH9.0 was used for antigen retrieval. 3,Secondary antibody was diluted at 1:200(room temperature, 45min).

Contact information

Orders: order@immunoway.com
Support: tech@immunoway.com
Telephone: 877-594-3616 (Toll Free), 408-747-0185
Website: http://www.immunoway.com
Address: 2200 Ringwood Ave San Jose, CA 95131 USA



Please scan the QR code
to access additional
product information:
PEX5R Rabbit pAb

For Research Use Only. Not for Use in Diagnostic Procedures.

[Antibody](#) | [ELISA Kits](#) | [Protein](#) | [Reagents](#)