

STON2 Rabbit pAb

CatalogNo: YT7374

| Key Features

Host Species

- Rabbit

Reactivity

- Human, Mouse

Applications

- WB, IF, Flow Cyt, ELISA, IHC

MW

- 100kD (Calculated)

Isotype

- IgG

| Recommended Dilution Ratios

WB 1:500-2000

IF/ICC 1:50-200

ELISA 1:2000-20000

IHC 1:50-200

| Storage

Storage*

-15°C to -25°C/1 year (Do not lower than -25°C)

Formulation

Liquid in PBS containing 50% glycerol, 0.5% BSA and 0.02% sodium azide.

| Basic Information

Clonality

Polyclonal

| Immunogen Information

Immunogen

Synthesized peptide derived from human STON2 AA range: 47-97

Specificity

This antibody detects endogenous levels of STON2 at Human/Mouse

| Target Information

Gene name STON2 STN2 STNB

Protein Name STON2

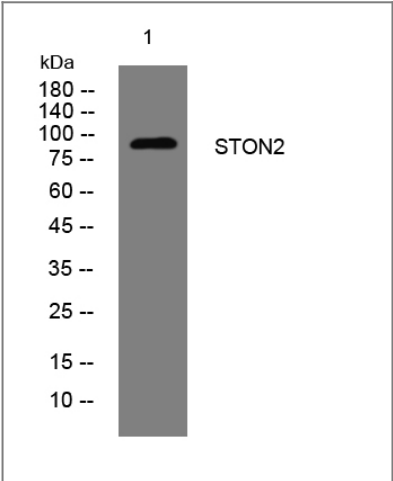
Organism	Gene ID	UniProt ID
Human	85439;	Q8WXE9;
Mouse	108800;	Q8BZ60;

Cellular Localization Cytoplasm . Membrane . Cell junction, synapse, synaptosome . Some fraction is membrane-associated.

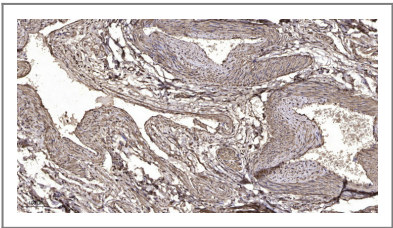
Tissue specificity Ubiquitous.

Function Domain:The Asn-Pro-Phe (NPF) motifs, which are found in proteins involved in the endocytic pathway, mediate the interaction with the EH domain of SYT1, SYT2, EPS15, EPS15R and ITSN1.,Function:Adapter protein involved in endocytic machinery. May be involved in the vesicle recycling. May facilitate clathrin-coated vesicle uncoating.,similarity:Belongs to the Stoned B family.,similarity:Contains 1 MHD (mu homology) domain.,similarity:Contains 1 SHD (stonin homology) domain.,subcellular location:Some fraction is membrane-associated.,subunit:Interacts with the second C2 domain of synaptotagmins SYT1 and SYT2. Interacts with EPS15, EPS15R and ITSN1. Interacts indirectly with the AP-2 adapter complex.,tissue specificity:Ubiquitous.,

Validation Data



Western blot analysis of lysates from PC-12 cells, primary antibody was diluted at 1:1000, 4° over night



Immunohistochemical analysis of paraffin-embedded human oophoroma. 1, Antibody was diluted at 1:200(4° overnight). 2, Tris-EDTA,pH9.0 was used for antigen retrieval. 3,Secondary antibody was diluted at 1:200(room temperature, 45min).

Contact information

Orders: order@immunoway.com
Support: tech@immunoway.com
Telephone: 877-594-3616 (Toll Free), 408-747-0185
Website: <http://www.immunoway.com>
Address: 2200 Ringwood Ave San Jose, CA 95131 USA



Please scan the QR code
to access additional
product information:
STON2 Rabbit pAb

For Research Use Only. Not for Use in Diagnostic Procedures.

[Antibody](#) | [ELISA Kits](#) | [Protein](#) | [Reagents](#)