

EXOS1 Rabbit pAb

CatalogNo: YT7031

Key Features

Host Species

- Rabbit

Reactivity

- Human, Mouse

Applications

- WB

MW

- 21kD (Calculated)

Isotype

- IgG

Recommended Dilution Ratios

WB 1:500-2000

Storage

Storage* -15°C to -25°C/1 year (Do not lower than -25°C)

Formulation Liquid in PBS containing 50% glycerol, 0.5% BSA and 0.02% sodium azide.

Basic Information

Clonality Polyclonal

Immunogen Information

Immunogen Synthesized peptide derived from human EXOS1 AA range: 93-143

Specificity This antibody detects endogenous levels of EXOS1 at Human/Mouse

Target Information

Gene name EXOSC1 CSL4 CGI-108

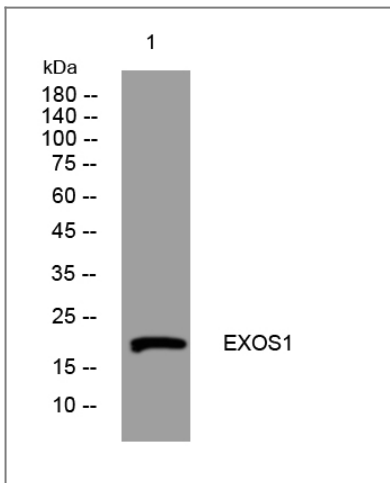
Protein Name EXOS1

Organism	Gene ID	UniProt ID
Human	51013 ;	Q9Y3B2 ;
Mouse	66583 ;	Q9DAA6 ;

Cellular Localization Nucleus, nucleolus . Nucleus . Cytoplasm .

Function Domain:The N- and C-terminal regions of the protein are required for interaction with RRP46.,Function:Component of the exosome 3'->5' exoribonuclease complex, a complex that degrades inherently unstable mRNAs containing AU-rich elements (AREs) within their 3' untranslated regions. Required for the 3'processing of the 7S pre-rRNA to the mature 5.8S rRNA. Has a 3'-5' exonuclease activity.,similarity:Contains 1 S1 motif domain.,subunit:Component of the exosome multienzyme ribonuclease complex composed of at least 11 proteins: EXOSC1/CSL4, EXOSC2/RRP4, EXOSC3/RRP40, EXOSC4/RRP41, EXOSC5/RRP46, EXOSC6/MTR3, EXOSC7/RRP42, EXOSC8/RRP43, EXOSC9/Scl-75, DIS3/RRP44, and EXOSC10/Scl-100 (only in the nuclear complex). Interacts directly with EXOSC5, EXOSC6, EXOSC7 and EXOSC8. Also associated with the GTPase Ran.,

Validation Data



Western blot analysis of lysates from U2OS cells, primary antibody was diluted at 1:1000, 4° over night

Contact information

Orders: order@immunoway.com
Support: tech@immunoway.com
Telephone: 877-594-3616 (Toll Free), 408-747-0185
Website: <http://www.immunoway.com>
Address: 2200 Ringwood Ave San Jose, CA 95131 USA



Please scan the QR code to access additional product information:
EXOS1 Rabbit pAb

