

AP2B1 Rabbit pAb

CatalogNo: YT6636

Key Features

Host Species

- Rabbit

Reactivity

- Human, Mouse, Rat

Applications

- WB

MW

- 103kD (Calculated)

Isotype

- IgG

Storage

Storage*

-15°C to -25°C/1 year (Do not lower than -25°C)

Formulation

Liquid in PBS containing 50% glycerol, 0.5% BSA and 0.02% sodium azide.

Recommended Dilution Ratios

WB 1:500-2000

Basic Information

Clonality

Polyclonal

Immunogen Information

Immunogen

Synthesized peptide derived from human AP2B1 AA range: 70-120

Specificity

This antibody detects endogenous levels of AP2B1 at Human/Mouse/Rat

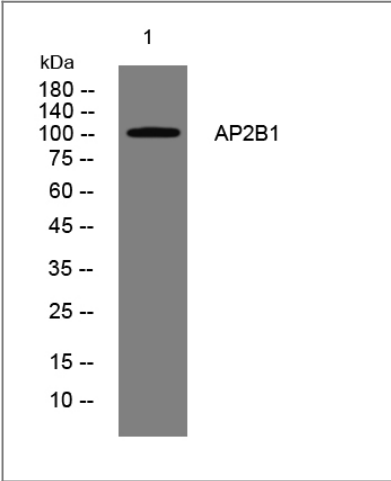
Target Information

Gene name

AP2B1 ADTB2 CLAPB1

Protein Name	AP2B1		
	Organism	Gene ID	UniProt ID
	Human	163;	P63010;
	Mouse	71770;	Q9DBG3;
	Rat	100912146;	P62944;
Cellular Localization	Cell membrane . Membrane, coated pit ; Peripheral membrane protein ; Cytoplasmic side . AP-2 appears to be excluded from internalizing CCVs and to disengage from sites of endocytosis seconds before internalization of the nascent CCV.		
Tissue specificity	Expressed in the brain (at protein level).		
Function	<p>Function:Component of the adaptor complexes which link clathrin to receptors in coated vesicles. Clathrin-associated protein complexes are believed to interact with the cytoplasmic tails of membrane proteins, leading to their selection and concentration. AP2B1 is a subunit of the plasma membrane adaptor. The complex binds polyphosphoinositides.,similarity:Belongs to the adaptor complexes large subunit family.,subcellular location:Component of the coat surrounding the cytoplasmic face of coated vesicles in the plasma membrane.,subunit:Adaptor protein complex 2 (AP-2) is an heterotetramer composed of two large adaptins (alpha-type subunit AP2A1 or AP2A2 and beta-type subunit AP2B1), a medium adaptin (mu-type subunit AP2M1) and a small adaptin (sigma-type subunit AP2S1). Binds EPN1, EPS15, SNAP91 and clathrin.,</p>		

Validation Data



Western blot analysis of lysates from HpeG2 cells, primary antibody was diluted at 1:1000, 4°over night

Contact information

Orders: order@immunoway.com
Support: tech@immunoway.com
Telephone: 877-594-3616 (Toll Free), 408-747-0185
Website: http://www.immunoway.com
Address: 2200 Ringwood Ave San Jose, CA 95131 USA



Please scan the QR code
to access additional
product information:
AP2B1 Rabbit pAb

For Research Use Only. Not for Use in Diagnostic Procedures.

[Antibody](#) | [ELISA Kits](#) | [Protein](#) | [Reagents](#)