

## Nectin 2 Rabbit pAb

CatalogNo: YT5603

### | Key Features

#### Host Species

- Rabbit

#### Reactivity

- Human, Mouse

#### Applications

- WB, ELISA

#### MW

- 65kD (Observed)

#### Isotype

- IgG

### | Recommended Dilution Ratios

**WB 1:500-1:2000**

**ELISA 1:10000**

**Not yet tested in other applications.**

### | Storage

#### Storage\*

-15°C to -25°C/1 year (Do not lower than -25°C)

#### Formulation

Liquid in PBS containing 50% glycerol, 0.5% BSA and 0.02% sodium azide.

### | Basic Information

#### Clonality

Polyclonal

### | Immunogen Information

#### Immunogen

Synthesized peptide derived from Poliovirus receptor-related protein 2 at AA range: 151-200

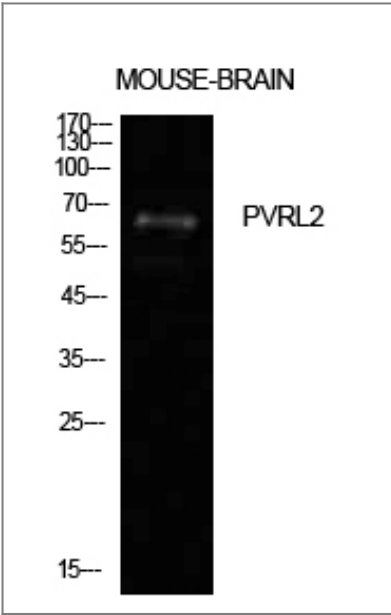
#### Specificity

Nectin 2 Polyclonal Antibody detects endogenous levels of Nectin 2 protein.

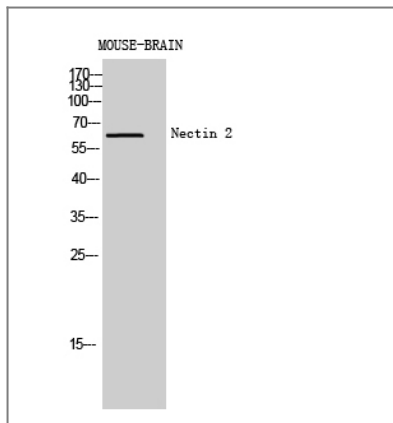
### | Target Information

Gene name	PVRL2		
Protein Name	Poliovirus receptor-related protein 2		
	Organism	Gene ID	UniProt ID
	Human	<a href="#">5819</a> ;	<a href="#">Q92692</a> ;
	Mouse		<a href="#">P32507</a> ;
Cellular Localization	Cell membrane; Single-pass type I membrane protein.		
Tissue specificity	Ubiquitous.		
Function	Function:Probable cell adhesion protein.,similarity:Belongs to the nectin family.,similarity:Contains 1 Ig-like V-type (immunoglobulin-like) domain.,similarity:Contains 2 Ig-like C2-type (immunoglobulin-like) domains.,subunit:Can form trans-heterodimers with PVRL3/nectin-3 (By similarity). Interacts with CD226. Receptor for alphaherpesvirus (HSV-1, HSV-2 and pseudorabies virus) entry into cells. Binds with low affinity to TIGIT.,tissue specificity:Ubiquitous.,		

| Validation Data



Western Blot analysis of mouse brain cells using Nectin 2 Polyclonal Antibody. Antibody was diluted at 1:500. Secondary antibody(catalog#:RS0002) was diluted at 1:20000



Western Blot analysis of MOUSE-BRAIN cells using Nectin 2 Polyclonal Antibody diluted at 1:500. Secondary antibody(catalog#:RS0002) was diluted at 1:20000

## Contact information

Orders: [order@immunoway.com](mailto:order@immunoway.com)  
Support: [tech@immunoway.com](mailto:tech@immunoway.com)  
Telephone: 877-594-3616 (Toll Free), 408-747-0185  
Website: <http://www.immunoway.com>  
Address: 2200 Ringwood Ave San Jose, CA 95131 USA



Please scan the QR code to access additional product information:  
**Nectin 2 Rabbit pAb**

For Research Use Only. Not for Use in Diagnostic Procedures.

[Antibody](#) | [ELISA Kits](#) | [Protein](#) | [Reagents](#)