

MPO Polyclonal Antibody

CatalogNo: YT5351

Key Features

Host Species

- Rabbit

Reactivity

- Human, Mouse, Rat

Applications

- WB, IHC, IF, ELISA

MW

- 85kD (Observed)

Isotype

- IgG

Recommended Dilution Ratios

IHC: 100-300**WB 1:500-1:2000****ELISA 1:20000****IF 1:50-200**

Storage

Storage* -15°C to -25°C/1 year (Do not lower than -25°C)**Formulation** 1 mg/ml

Basic Information

Clonality Polyclonal

Immunogen Information

Immunogen The antiserum was produced against synthesized peptide derived from the N-terminal region of human MPO. AA range:41-90**Specificity** MPO Polyclonal Antibody detects endogenous levels of MPO protein.

Target Information

Gene name MPO

Protein Name Myeloperoxidase

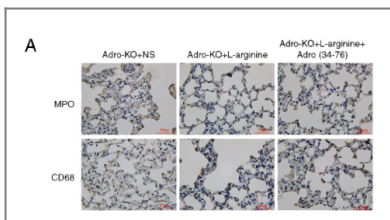
Organism	Gene ID	UniProt ID
Human	4353 ;	P05164 ;
Mouse	17523 ;	P11247 ;

Cellular Localization Lysosome.

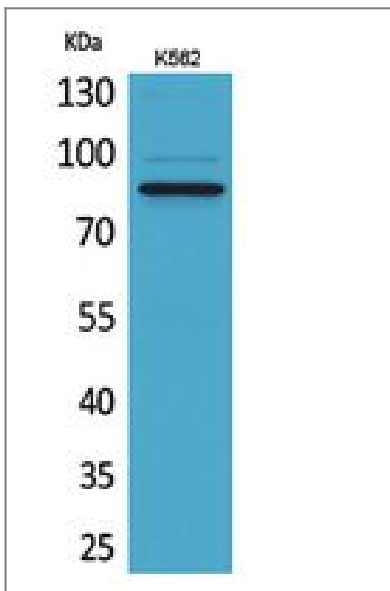
Tissue specificity Leukemia,Leukocyte,Liver,Plasma,Saliva,

Function Catalytic activity:Cl(-) + H(2)O(2) = HOCl + 2 H(2)O.,Catalytic activity:Donor + H(2)O(2) = oxidized donor + 2 H(2)O.,cofactor:Binds 1 calcium ion per heterodimer.,cofactor:Binds 1 heme B (iron-protoporphyrin IX) group covalently per heterodimer.,Disease:Defects in MPO are the cause of myeloperoxidase deficiency (MPD) [MIM:254600]. MPD is an autosomal recessive defect that results in disseminated candidiasis.,Function:Part of the host defense system of polymorphonuclear leukocytes. It is responsible for microbicidal activity against a wide range of organisms. In the stimulated PMN, MPO catalyzes the production of hypohalous acids, primarily hypochlorous acid in physiologic situations, and other toxic intermediates that greatly enhance PMN microbicidal activity.,online information:MPO mutation db,online information:Myeloperoxidase entry,similarity:Belongs to the peroxidase family. XPO subfamily.,subunit:Tetramer of two light chains and two heavy chains.,

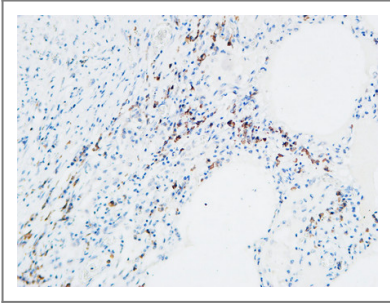
Validation Data



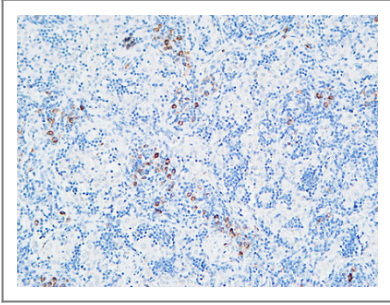
Adropin attenuates pancreatitis-associated lung injury through PPAR γ phosphorylation-related macrophage polarization. INTERNATIONAL JOURNAL OF MOLECULAR MEDICINE Shangeng Weng WB Mouse 1:1000 lung tissue



Western Blot analysis of K562 cells using MPO Polyclonal Antibody. Secondary antibody(catalog#:RS0002) was diluted at 1:20000



Immunohistochemical analysis of paraffin-embedded Human lung. 1, Antibody was diluted at 1:100(4° overnight). 2, High-pressure and temperature EDTA, pH8.0 was used for antigen retrieval. 3,Secondary antibody was diluted at 1:200(room temperature, 30min).



Immunohistochemical analysis of paraffin-embedded Human lymphoma. 1, Antibody was diluted at 1:100(4° overnight). 2, High-pressure and temperature EDTA, pH8.0 was used for antigen retrieval. 3,Secondary antibody was diluted at 1:200(room temperature, 30min).

| Contact information

Orders: order@immunoway.com
Support: tech@immunoway.com
Telephone: 408-747-0189 (USA) 400-8787-807(China)
Website: <http://www.immunoway.com>
Address: 2200 Ringwood Ave San Jose, CA 95131 USA



Please scan the QR code to access additional product information:
MPO Polyclonal Antibody

For Research Use Only. Not for Use in Diagnostic Procedures.

[Antibody](#) | [ELISA Kits](#) | [Protein](#) | [Reagents](#)