

## TF Rabbit pAb

CatalogNo: YT5194

### Key Features

**Host Species**

- Rabbit

**Reactivity**

- Human,Rat,Mouse,

**Applications**

- WB,IHC,IF,ELISA

**MW**

- 33kD (Observed)

**Isotype**

- IgG

### Recommended Dilution Ratios

**WB 1:500-1:2000****IHC: 1:100-300****ELISA 1:20000****IF 1:50-200**

### Storage

**Storage\***

-15°C to -25°C/1 year(Do not lower than -25°C)

**Formulation**

Liquid in PBS containing 50% glycerol, 0.5% BSA and 0.02% sodium azide.

### Basic Information

**Clonality**

Polyclonal

### Immunogen Information

**Immunogen**

The antiserum was produced against synthesized peptide derived from the Internal region of human F3. AA range:131-180

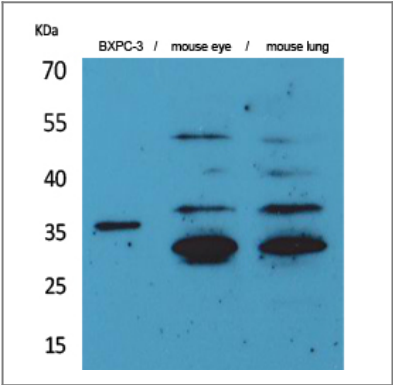
**Specificity**

TF Polyclonal Antibody detects endogenous levels of TF protein.

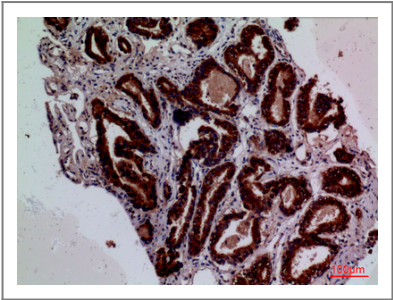
### Target Information

Gene name	F3		
Protein Name	Tissue factor		
	Organism	Gene ID	UniProt ID
	Human	<a href="#">2152</a> ;	<a href="#">P13726</a> ;
	Mouse		<a href="#">P20352</a> ;
Cellular Localization	[Isoform 1]: Membrane ; Single-pass type I membrane protein .; [Isoform 2]: Secreted .		
Tissue specificity	Lung, placenta and pancreas.		
Function	Function:Initiates blood coagulation by forming a complex with circulating factor VII or VIIa. The [TF:VIIa] complex activates factors IX or X by specific limited protolysis. TF plays a role in normal hemostasis by initiating the cell-surface assembly and propagation of the coagulation protease cascade.,induction:TF expression is highly dependent upon cell type. TF can also be induced by the inflammatory mediators interleukin 1 and TNF, as well as by endotoxin, to appear on monocytes and vascular endothelial cells as a component of cellular immune response.,online information:The Singapore human mutation and polymorphism database,online information:Tissue factor entry,similarity:Belongs to the tissue factor family.,		

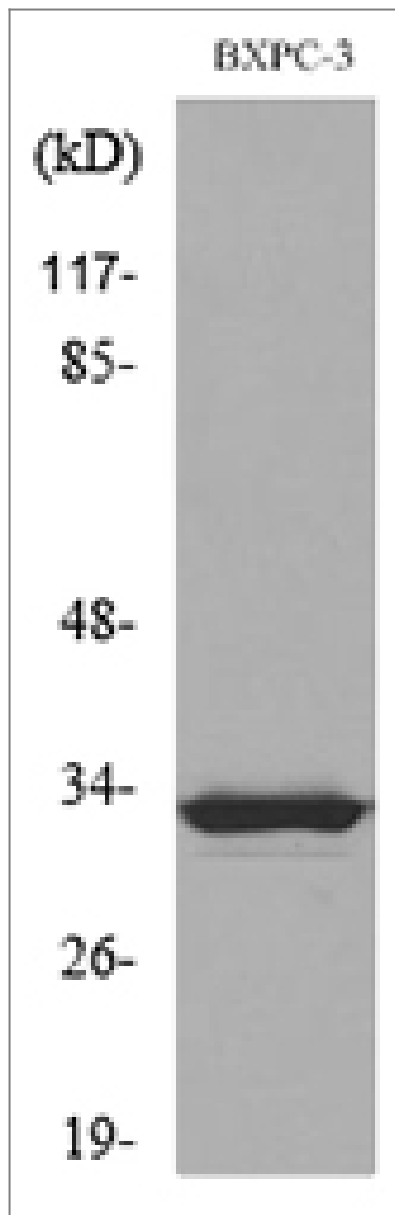
Validation Data



Western Blot analysis of BXPc-3, mouse eye, mouse lung cells using TF Polyclonal Antibody. Secondary antibody(catalog#:RS0002) was diluted at 1:20000



Immunohistochemical analysis of paraffin-embedded human-prostate-cancer, antibody was diluted at 1:100



Western blot analysis of lysate from BXPC-3 cells, using F3 Antibody.

## Contact information

Orders: [order@immunoway.com](mailto:order@immunoway.com)  
Support: [tech@immunoway.com](mailto:tech@immunoway.com)  
Telephone: 877-594-3616 (Toll Free), 408-747-0185  
Website: <http://www.immunoway.com>  
Address: 2200 Ringwood Ave San Jose, CA 95131 USA



Please scan the QR code  
to access additional  
product information:  
**TF Rabbit pAb**

For Research Use Only. Not for Use in Diagnostic Procedures.

[Antibody](#) | [ELISA Kits](#) | [Protein](#) | [Reagents](#)